

# Dapl1 Antibody - N-terminal region

Rabbit Polyclonal Antibody

Catalog # AI15487

## Product Information

---

<b>Application</b>	WB
<b>Primary Accession</b>	<a href="#">Q9D757</a>
<b>Other Accession</b>	<a href="#">NM_029723</a> , <a href="#">NP_083999</a>
<b>Reactivity</b>	Human, Mouse, Rat, Pig, Dog, Bovine
<b>Predicted</b>	Human, Mouse, Rat, Pig, Dog, Bovine
<b>Host</b>	Rabbit
<b>Clonality</b>	Polyclonal
<b>Calculated MW</b>	11813

## Additional Information

---

<b>Gene ID</b>	76747
<b>Alias Symbol</b>	2310032F03Rik, EEDA
<b>Other Names</b>	Death-associated protein-like 1, Early epithelial differentiation-associated protein, Dapl1, Eeda
<b>Format</b>	Liquid. Purified antibody supplied in 1x PBS buffer with 0.09% (w/v) sodium azide and 2% sucrose.
<b>Reconstitution &amp; Storage</b>	Add 50 ul of distilled water. Final anti-Dapl1 antibody concentration is 1 mg/ml in PBS buffer with 2% sucrose. For longer periods of storage, store at 20°C. Avoid repeat freeze-thaw cycles.
<b>Precautions</b>	Dapl1 Antibody - N-terminal region is for research use only and not for use in diagnostic or therapeutic procedures.

## Protein Information

---

<b>Name</b>	Dapl1
<b>Synonyms</b>	Eeda
<b>Function</b>	May play a role in the early stages of epithelial differentiation or in apoptosis.
<b>Tissue Location</b>	Expressed in hair follicle, corneal epithelium, epidermis and footpad epithelium (at protein level)

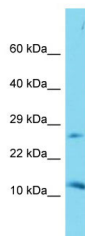
## References

---

Carninci P.,et al.Science 309:1559-1563(2005).  
Church D.M.,et al.PLoS Biol. 7:E1000112-E1000112(2009).  
Sun L.,et al.J. Cell. Physiol. 206:103-111(2006).

## Images

---



Host: Rabbit  
Target Name: Dapl1  
Sample Tissue: Mouse Kidney lysates  
Antibody Dilution: 1.0µg/ml

Please note: All products are 'FOR RESEARCH USE ONLY. NOT FOR USE IN DIAGNOSTIC OR THERAPEUTIC PROCEDURES'.