

DNAH12 Antibody - N-terminal region

Rabbit Polyclonal Antibody

Catalog # AI15490

Product Information

Application	WB
Primary Accession	Q6ZR08
Other Accession	NM_178504 , NP_848599
Reactivity	Human, Rat, Rabbit, Dog, Horse
Predicted	Human, Rat, Rabbit, Dog, Horse
Host	Rabbit
Clonality	Polyclonal
Calculated MW	356942

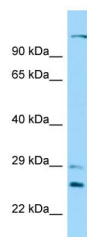
Additional Information

Gene ID	201625
Alias Symbol	DHC3, DLP12, DNAH12L, DNAH7L, DNAHC12, DNAHC3, DNHD2, FLJ40427, FLJ44290, HL-19, HL19, hdhc3
Other Names	Dynein heavy chain 12, axonemal, Axonemal beta dynein heavy chain 12, Axonemal dynein heavy chain 12-like protein, Axonemal dynein heavy chain 7-like protein, Ciliary dynein heavy chain 12, Dynein heavy chain 7-like, axonemal, Dynein heavy chain domain-containing protein 2, DNAH12
Format	Liquid. Purified antibody supplied in 1x PBS buffer with 0.09% (w/v) sodium azide and 2% sucrose.
Reconstitution & Storage	Add 50 ul of distilled water. Final anti-DNAH12 antibody concentration is 1 mg/ml in PBS buffer with 2% sucrose. For longer periods of storage, store at 20°C. Avoid repeat freeze-thaw cycles.
Precautions	DNAH12 Antibody - N-terminal region is for research use only and not for use in diagnostic or therapeutic procedures.

Protein Information

Name	DNAH12
Function	Force generating protein of respiratory cilia. Produces force towards the minus ends of microtubules. Dynein has ATPase activity; the force-producing power stroke is thought to occur on release of ADP. Involved in sperm motility; implicated in sperm flagellar assembly (By similarity).
Cellular Location	Cytoplasm, cytoskeleton, cilium axoneme

Images



Host: Rabbit
Target Name: DNAH12
Sample Tissue: 721_B Whole cell lysate
S
Antibody Dilution: 1.0µg/ml

Please note: All products are 'FOR RESEARCH USE ONLY. NOT FOR USE IN DIAGNOSTIC OR THERAPEUTIC PROCEDURES'.