

F2RL3 Antibody - C-terminal region

Rabbit Polyclonal Antibody

Catalog # AI15491

Product Information

Application	WB
Primary Accession	Q96RIO
Other Accession	NM_003950 , NP_003941
Reactivity	Human
Predicted	Human
Host	Rabbit
Clonality	Polyclonal
Calculated MW	41133

Additional Information

Gene ID	9002
Alias Symbol	PAR4
Other Names	Proteinase-activated receptor 4, PAR-4, Coagulation factor II receptor-like 3, Thrombin receptor-like 3, F2RL3, PAR4
Format	Liquid. Purified antibody supplied in 1x PBS buffer with 0.09% (w/v) sodium azide and 2% sucrose.
Reconstitution & Storage	Add 50 ul of distilled water. Final anti-F2RL3 antibody concentration is 1 mg/ml in PBS buffer with 2% sucrose. For longer periods of storage, store at 20°C. Avoid repeat freeze-thaw cycles.
Precautions	F2RL3 Antibody - C-terminal region is for research use only and not for use in diagnostic or therapeutic procedures.

Protein Information

Name	F2RL3
Synonyms	PAR4
Function	Receptor for activated thrombin or trypsin coupled to G proteins that stimulate phosphoinositide hydrolysis (PubMed: 10079109). May play a role in platelets activation (PubMed: 10079109).
Cellular Location	Cell membrane; Multi-pass membrane protein.
Tissue Location	Widely expressed, with highest levels in lung, pancreas, thyroid, testis and small intestine. Not expressed in brain, kidney, spinal cord and peripheral

blood leukocytes. Also detected in platelets

References

Kahn M.L.,et al.J. Biol. Chem. 273:23290-23296(1998).

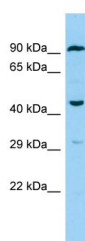
Kahn M.L.,et al.Nature 394:690-694(1998).

Xu W.-F.,et al.Proc. Natl. Acad. Sci. U.S.A. 95:6642-6646(1998).

King M.M.,et al.Submitted (OCT-2003) to the EMBL/GenBank/DDBJ databases.

Kahn M.L.,et al.J. Clin. Invest. 103:879-887(1999).

Images



Host: Rabbit

Target Name: F2RL3

Sample Tissue: THP-1 Whole cell lysate

S

Antibody Dilution: 1.0µg/ml

Please note: All products are 'FOR RESEARCH USE ONLY. NOT FOR USE IN DIAGNOSTIC OR THERAPEUTIC PROCEDURES'.