

GPR25 Antibody - middle region

Rabbit Polyclonal Antibody

Catalog # AI15495

Product Information

Application	WB
Primary Accession	O00155
Other Accession	NM_005298 , NP_005289
Reactivity	Human, Rabbit
Predicted	Human, Rabbit
Host	Rabbit
Clonality	Polyclonal
Calculated MW	38779

Additional Information

Gene ID	2848
Other Names	Probable G-protein coupled receptor 25, GPR25
Format	Liquid. Purified antibody supplied in 1x PBS buffer with 0.09% (w/v) sodium azide and 2% sucrose.
Reconstitution & Storage	Add 50 ul of distilled water. Final anti-GPR25 antibody concentration is 1 mg/ml in PBS buffer with 2% sucrose. For longer periods of storage, store at 20°C. Avoid repeat freeze-thaw cycles.
Precautions	GPR25 Antibody - middle region is for research use only and not for use in diagnostic or therapeutic procedures.

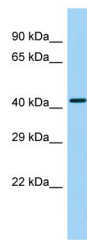
Protein Information

Name	GPR25
Function	Orphan receptor.
Cellular Location	Cell membrane; Multi-pass membrane protein.

References

- Jung B.P., et al. Biochem. Biophys. Res. Commun. 230:69-72(1997).
Jung B.P., et al. Submitted (NOV-2003) to the EMBL/GenBank/DDBJ databases.

Images



Host: Rabbit
Target Name: GPR25
Sample Tissue: Placenta lysates
Antibody Dilution: 1.0 μ g/ml

Please note: All products are 'FOR RESEARCH USE ONLY. NOT FOR USE IN DIAGNOSTIC OR THERAPEUTIC PROCEDURES'.