

# HKDC1 Antibody - C-terminal region

Rabbit Polyclonal Antibody

Catalog # AI15500

## Product Information

---

<b>Application</b>	WB
<b>Primary Accession</b>	<a href="#">Q2TB90</a>
<b>Other Accession</b>	<a href="#">NM_025130</a> , <a href="#">NP_079406</a>
<b>Reactivity</b>	Human, Mouse, Rat, Rabbit, Pig, Dog, Horse, Bovine
<b>Predicted</b>	Human, Mouse, Rat, Rabbit, Pig, Dog, Horse, Bovine
<b>Host</b>	Rabbit
<b>Clonality</b>	Polyclonal
<b>Calculated MW</b>	102545

## Additional Information

---

<b>Gene ID</b>	80201
<b>Other Names</b>	Putative hexokinase HKDC1, 2.7.1.1, Hexokinase domain-containing protein 1, HKDC1
<b>Format</b>	Liquid. Purified antibody supplied in 1x PBS buffer with 0.09% (w/v) sodium azide and 2% sucrose.
<b>Reconstitution &amp; Storage</b>	Add 50 ul of distilled water. Final anti-HKDC1 antibody concentration is 1 mg/ml in PBS buffer with 2% sucrose. For longer periods of storage, store at 20°C. Avoid repeat freeze-thaw cycles.
<b>Precautions</b>	HKDC1 Antibody - C-terminal region is for research use only and not for use in diagnostic or therapeutic procedures.

## Protein Information

---

<b>Name</b>	HKDC1 ( <a href="#">HGNC:23302</a> )
<b>Function</b>	Catalyzes the phosphorylation of hexose to hexose 6- phosphate, although at very low level compared to other hexokinases (PubMed: <a href="#">30517626</a> ). Has low glucose phosphorylating activity compared to other hexokinases (PubMed: <a href="#">30517626</a> ). Involved in glucose homeostasis and hepatic lipid accumulation. Required to maintain whole-body glucose homeostasis during pregnancy; however additional evidences are required to confirm this role (By similarity).
<b>Cellular Location</b>	Cytoplasm. Mitochondrion membrane; Peripheral membrane protein. Photoreceptor inner segment {ECO:0000250 UniProtKB:Q91W97}. Note=The mitochondrial-binding peptide (MBP) region promotes association with the

mitochondrion

## Tissue Location

Widely expressed (PubMed:27459389, PubMed:29401404). Highly expressed in the brush border, surface epithelium and the myenteric plexus of the small and large intestines; the acinar centrocytes and interlobular ducts of the pancreas; and the alveolar macrophages in the lungs (at protein level) (PubMed:29401404) Present at moderate level in the thyroid follicular epithelium (at protein level) (PubMed:29401404).

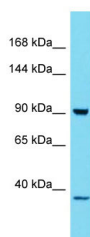
## References

---

Deloukas P.,et al.Nature 429:375-381(2004).  
Ota T.,et al.Nat. Genet. 36:40-45(2004).  
Bechtel S.,et al.BMC Genomics 8:399-399(2007).  
Burkard T.R.,et al.BMC Syst. Biol. 5:17-17(2011).

## Images

---



Host: Rabbit  
Target Name: HKDC1  
Sample Tissue: 293T Whole cell lysate  
S  
Antibody Dilution: 1.0µg/ml

Please note: All products are 'FOR RESEARCH USE ONLY. NOT FOR USE IN DIAGNOSTIC OR THERAPEUTIC PROCEDURES'.