

FASTKD3 Antibody - N-terminal region

Rabbit Polyclonal Antibody

Catalog # AI15503

Product Information

Application	WB
Primary Accession	Q14CZ7
Other Accession	NM_024091 , NP_076996
Reactivity	Human
Predicted	Human
Host	Rabbit
Clonality	Polyclonal
Calculated MW	75689

Additional Information

Gene ID	79072
Alias Symbol	FLJ23274, MGC142123, MGC5297
Other Names	FAST kinase domain-containing protein 3, FASTKD3
Format	Liquid. Purified antibody supplied in 1x PBS buffer with 0.09% (w/v) sodium azide and 2% sucrose.
Reconstitution & Storage	Add 50 ul of distilled water. Final anti-FASTKD3 antibody concentration is 1 mg/ml in PBS buffer with 2% sucrose. For longer periods of storage, store at 20°C. Avoid repeat freeze-thaw cycles.
Precautions	FASTKD3 Antibody - N-terminal region is for research use only and not for use in diagnostic or therapeutic procedures.

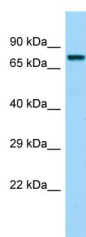
Protein Information

Name	FASTKD3
Function	Required for normal mitochondrial respiration (PubMed: 20869947). Increases steady-state levels and half-lives of a subset of mature mitochondrial mRNAs MT-ND2, MT-ND3, MT-CYTB, MT-CO2, and MT-ATP8/6. Promotes MT-CO1 mRNA translation and increases mitochondrial complex IV assembly and activity (PubMed: 27789713).
Cellular Location	Mitochondrion
Tissue Location	Expression detected in spleen, thymus, testis, ovary, colon, heart, smooth muscle, kidney, brain, lung, liver and white adipose tissue with highest expression in liver and thyroid

References

Schmutz J.,et al.Nature 431:268-274(2004).
Sjoeblom T.,et al.Science 314:268-274(2006).

Images



Host: Rabbit

Target Name: FASTKD3

Sample Tissue: 721_B Whole cell lysate

S

Antibody Dilution: 1.0µg/mlFASTKD3 is supported by
BioGPS gene expression data to be expressed in 721_B

Please note: All products are 'FOR RESEARCH USE ONLY. NOT FOR USE IN DIAGNOSTIC OR THERAPEUTIC PROCEDURES'.