

KDEL2 Antibody - middle region

Rabbit Polyclonal Antibody

Catalog # AI15507

Product Information

Application	WB
Primary Accession	P33947
Other Accession	NM_001100603 , NP_001094073
Reactivity	Human
Predicted	Human
Host	Rabbit
Clonality	Polyclonal
Calculated MW	24422

Additional Information

Gene ID	11014
Alias Symbol	ELP-1, ERD2.2
Other Names	ER lumen protein-retaining receptor 2, ERD2-like protein 1, ELP-1, KDEL endoplasmic reticulum protein retention receptor 2, KDEL receptor 2, KDEL2, ERD2.2
Format	Liquid. Purified antibody supplied in 1x PBS buffer with 0.09% (w/v) sodium azide and 2% sucrose.
Reconstitution & Storage	Add 50 ul of distilled water. Final anti-KDEL2 antibody concentration is 1 mg/ml in PBS buffer with 2% sucrose. For longer periods of storage, store at 20°C. Avoid repeat freeze-thaw cycles.
Precautions	KDEL2 Antibody - middle region is for research use only and not for use in diagnostic or therapeutic procedures.

Protein Information

Name	KDEL2
Synonyms	ERD2.2 {ECO:0000303 PubMed:1325562}
Function	Membrane receptor that binds the K-D-E-L sequence motif in the C-terminal part of endoplasmic reticulum resident proteins and maintains their localization in that compartment by participating to their vesicle-mediated recycling back from the Golgi (PubMed: 1325562 , PubMed: 18086916 , PubMed: 33053334). Binding is pH dependent, and is optimal at pH 5-5.4 (By similarity).

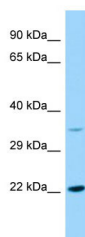
Cellular Location

Endoplasmic reticulum membrane; Multi-pass membrane protein {ECO:0000250|UniProtKB:Q5ZKX9}. Golgi apparatus membrane; Multi-pass membrane protein {ECO:0000250|UniProtKB:Q5ZKX9}. Cytoplasmic vesicle, COPI-coated vesicle membrane; Multi-pass membrane protein {ECO:0000250|UniProtKB:Q5ZKX9} Note=Localized in the Golgi in the absence of bound proteins with the sequence motif K-D-E-L. Trafficks back to the endoplasmic reticulum together with cargo proteins containing the sequence motif K-D-E-L

References

Lewis M.J.,et al.J. Mol. Biol. 226:913-916(1992).
Hsu V.W.,et al.Cell 69:625-635(1992).
Ota T.,et al.Nat. Genet. 36:40-45(2004).
Hillier L.W.,et al.Nature 424:157-164(2003).
Scherer S.W.,et al.Science 300:767-772(2003).

Images



Host: Rabbit
Target Name: KDELR2
Sample Tissue: RPMI-8226 Whole cell lysate
S
Antibody Dilution: 1.0µg/ml

Please note: All products are 'FOR RESEARCH USE ONLY. NOT FOR USE IN DIAGNOSTIC OR THERAPEUTIC PROCEDURES'.