

MRPL4 Antibody - N-terminal region

Rabbit Polyclonal Antibody

Catalog # AI15515

Product Information

Application	WB
Primary Accession	Q9BYD3
Other Accession	AAG02005
Reactivity	Human, Rat, Rabbit, Pig, Dog, Guinea Pig, Horse, Bovine
Predicted	Human, Rat, Rabbit, Pig, Dog, Guinea Pig, Horse, Bovine
Host	Rabbit
Clonality	Polyclonal
Calculated MW	34919

Additional Information

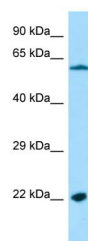
Gene ID	51073
Alias Symbol	CDABP0091, CGI-28, L4mt
Other Names	39S ribosomal protein L4, mitochondrial, L4mt, MRP-L4, MRPL4
Format	Liquid. Purified antibody supplied in 1x PBS buffer with 0.09% (w/v) sodium azide and 2% sucrose.
Reconstitution & Storage	Add 50 ul of distilled water. Final anti-MRPL4 antibody concentration is 1 mg/ml in PBS buffer with 2% sucrose. For longer periods of storage, store at 20°C. Avoid repeat freeze-thaw cycles.
Precautions	MRPL4 Antibody - N-terminal region is for research use only and not for use in diagnostic or therapeutic procedures.

Protein Information

Name	MRPL4
Cellular Location	Mitochondrion

Images

Host: Rabbit
Target Name: MRPL4
Sample Tissue: HepG2 Whole cell lysate
S



Antibody Dilution: 1.0µg/ml

Please note: All products are 'FOR RESEARCH USE ONLY. NOT FOR USE IN DIAGNOSTIC OR THERAPEUTIC PROCEDURES'.