

NIPAL4 Antibody - N-terminal region

Rabbit Polyclonal Antibody

Catalog # AI15518

Product Information

| | |
|--------------------------|---|
| Application | WB |
| Primary Accession | Q0D2K0 |
| Other Accession | NM_001172292 , NP_001165763 |
| Reactivity | Human |
| Predicted | Human |
| Host | Rabbit |
| Clonality | Polyclonal |
| Calculated MW | 44005 |

Additional Information

| | |
|-------------------------------------|---|
| Gene ID | 348938 |
| Alias Symbol | ICHTHYIN, ICHYN |
| Other Names | Magnesium transporter NIPA4, Ichthyin, NIPA-like protein 4, Non-imprinted in Prader-Willi/Angelman syndrome region protein 4, NIPAL4, ICHN, NIPA4 |
| Format | Liquid. Purified antibody supplied in 1x PBS buffer with 0.09% (w/v) sodium azide and 2% sucrose. |
| Reconstitution & Storage | Add 50 ul of distilled water. Final anti-NIPAL4 antibody concentration is 1 mg/ml in PBS buffer with 2% sucrose. For longer periods of storage, store at 20°C. Avoid repeat freeze-thaw cycles. |
| Precautions | NIPAL4 Antibody - N-terminal region is for research use only and not for use in diagnostic or therapeutic procedures. |

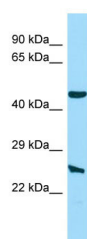
Protein Information

| | |
|--------------------------|---|
| Name | NIPAL4 |
| Synonyms | ICHN, NIPA4 |
| Function | Acts as a Mg(2+) transporter. Can also transport other divalent cations such as Ba(2+), Sr(2+) and Fe(2+) but to a much less extent than Mg(2+) (By similarity). May be a receptor for ligands (trioxilins A3 and B3) from the hepoxilin pathway (PubMed: 15317751). |
| Cellular Location | Cell membrane {ECO:0000250 UniProtKB:Q9JJC8}; Multi-pass membrane protein |

Tissue Location

Highly expressed in brain, lung, stomach, keratinocytes and leukocytes, and in all other tissues tested except liver, thyroid and fetal brain.

Images



Host: Rabbit

Target Name: NIPAL4

Sample Tissue: Hela Whole cell lysate

S

Antibody Dilution: 1.0µg/ml

Please note: All products are 'FOR RESEARCH USE ONLY. NOT FOR USE IN DIAGNOSTIC OR THERAPEUTIC PROCEDURES'.