

# PPM1L Antibody - middle region

Rabbit Polyclonal Antibody

Catalog # AI15528

## Product Information

---

<b>Application</b>	WB
<b>Primary Accession</b>	<a href="#">Q5SGD2</a>
<b>Other Accession</b>	<a href="#">NM_139245</a> , <a href="#">NP_640338</a>
<b>Reactivity</b>	Human, Mouse, Rat, Dog, Guinea Pig, Horse, Bovine
<b>Predicted</b>	Human, Mouse, Rat, Pig, Dog, Guinea Pig, Horse, Bovine
<b>Host</b>	Rabbit
<b>Clonality</b>	Polyclonal
<b>Calculated MW</b>	41053

## Additional Information

---

<b>Gene ID</b>	151742
<b>Alias Symbol</b> <b>Other Names</b>	MGC132545, MGC132547, PP2C-epsilon, PP2CE, PPM1-LIKE Protein phosphatase 1L, 3.1.3.16, Protein phosphatase 1-like, Protein phosphatase 2C isoform epsilon, PP2C-epsilon, PPM1L, PP2CE
<b>Format</b>	Liquid. Purified antibody supplied in 1x PBS buffer with 0.09% (w/v) sodium azide and 2% sucrose.
<b>Reconstitution &amp; Storage</b>	Add 50 ul of distilled water. Final anti-PPM1L antibody concentration is 1 mg/ml in PBS buffer with 2% sucrose. For longer periods of storage, store at 20°C. Avoid repeat freeze-thaw cycles.
<b>Precautions</b>	PPM1L Antibody - middle region is for research use only and not for use in diagnostic or therapeutic procedures.

## Protein Information

---

<b>Name</b>	PPM1L
<b>Synonyms</b>	PP2CE
<b>Function</b>	Acts as a suppressor of the SAPK signaling pathways by associating with and dephosphorylating MAP3K7/TAK1 and MAP3K5, and by attenuating the association between MAP3K7/TAK1 and MAP2K4 or MAP2K6.
<b>Cellular Location</b>	Membrane; Single-pass type I membrane protein
<b>Tissue Location</b>	Ubiquitous. Highly expressed in heart, placenta, lung, liver, kidney and pancreas.

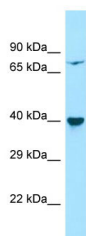
## References

---

Jin F.,et al.Mol. Biol. Rep. 31:197-202(2004).  
Ota T.,et al.Nat. Genet. 36:40-45(2004).  
Saito J.,et al.Biochem. J. 405:591-596(2007).

## Images

---



Host: Rabbit  
Target Name: PPM1L  
Sample Tissue: HepG2 Whole cell lysate  
S  
Antibody Dilution: 1.0µg/ml

Please note: All products are 'FOR RESEARCH USE ONLY. NOT FOR USE IN DIAGNOSTIC OR THERAPEUTIC PROCEDURES'.