

# PRSS33 Antibody - C-terminal region

Rabbit Polyclonal Antibody

Catalog # AI15530

## Product Information

---

<b>Application</b>	WB
<b>Primary Accession</b>	<a href="#">Q8NF86</a>
<b>Other Accession</b>	<a href="#">NM_152891</a> , <a href="#">NP_690851</a>
<b>Reactivity</b>	Human, Mouse, Rat, Rabbit, Dog, Guinea Pig, Horse, Bovine
<b>Predicted</b>	Human, Mouse, Rat, Rabbit, Pig, Dog, Guinea Pig, Horse, Bovine
<b>Host</b>	Rabbit
<b>Clonality</b>	Polyclonal
<b>Calculated MW</b>	29787

## Additional Information

---

<b>Gene ID</b>	260429
<b>Alias Symbol</b>	EOS
<b>Other Names</b>	Serine protease 33, 3.4.21.-, Serine protease EOS, PRSS33
<b>Format</b>	Liquid. Purified antibody supplied in 1x PBS buffer with 0.09% (w/v) sodium azide and 2% sucrose.
<b>Reconstitution &amp; Storage</b>	Add 50 ul of distilled water. Final anti-PRSS33 antibody concentration is 1 mg/ml in PBS buffer with 2% sucrose. For longer periods of storage, store at 20°C. Avoid repeat freeze-thaw cycles.
<b>Precautions</b>	PRSS33 Antibody - C-terminal region is for research use only and not for use in diagnostic or therapeutic procedures.

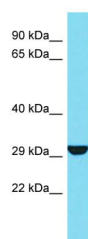
## Protein Information

---

<b>Name</b>	PRSS33
<b>Function</b>	Serine protease that has amidolytic activity, cleaving its substrates before Arg residues.
<b>Cellular Location</b>	Secreted.
<b>Tissue Location</b>	Predominantly expressed in macrophages. Present in the spleen, small and large intestine, lung and brain (at protein level). Highly expressed in peripheral leukocytes, ovary, retina, spleen and stomach. Moderately expressed in thymus, uterus and platelets, as well as some brain tissues, such as thalamus and fetal brain.

## Images

---



Host: Rabbit  
Target Name: PRSS33  
Sample Tissue: 721\_B Whole cell lysate  
S  
Antibody Dilution: 1.0µg/ml

Please note: All products are 'FOR RESEARCH USE ONLY. NOT FOR USE IN DIAGNOSTIC OR THERAPEUTIC PROCEDURES'.