

RTN4RL1 Antibody - C-terminal region

Rabbit Polyclonal Antibody

Catalog # AI15532

Product Information

Application	WB
Primary Accession	Q86UN2
Other Accession	NM_178568 , NP_848663
Reactivity	Human, Pig, Dog, Horse, Bovine
Predicted	Human, Pig, Dog, Horse, Bovine
Host	Rabbit
Clonality	Polyclonal
Calculated MW	49065

Additional Information

Gene ID	146760
Alias Symbol	NGRH2, NgR3
Other Names	Reticulon-4 receptor-like 1, Nogo receptor-like 2, Nogo-66 receptor homolog 2, Nogo-66 receptor-related protein 3, NgR3, RTN4RL1 (HGNC:21329)
Format	Liquid. Purified antibody supplied in 1x PBS buffer with 0.09% (w/v) sodium azide and 2% sucrose.
Reconstitution & Storage	Add 50 ul of distilled water. Final anti-RTN4RL1 antibody concentration is 1 mg/ml in PBS buffer with 2% sucrose. For longer periods of storage, store at 20°C. Avoid repeat freeze-thaw cycles.
Precautions	RTN4RL1 Antibody - C-terminal region is for research use only and not for use in diagnostic or therapeutic procedures.

Protein Information

Name	RTN4RL1 (HGNC:21329)
Function	Cell surface receptor. Plays a functionally redundant role in postnatal brain development and in regulating axon regeneration in the adult central nervous system. Contributes to normal axon migration across the brain midline and normal formation of the corpus callosum. Protects motoneurons against apoptosis; protection against apoptosis is probably mediated by MAG. Plays a role in inhibiting neurite outgrowth and axon regeneration via its binding to neuronal chondroitin sulfate proteoglycans. Binds heparin (By similarity). Like other family members, plays a role in restricting the number dendritic spines and the number of synapses that are formed during brain development (PubMed: 22325200). Signaling mediates activation of Rho and downstream

reorganization of the actin cytoskeleton (PubMed:[22325200](#)).

Cellular Location

Cell membrane; Lipid-anchor, GPI-anchor. Membrane raft. Perikaryon {ECO:0000250|UniProtKB:Q80WD0}. Cell projection {ECO:0000250|UniProtKB:Q80WD0}. Note=Localized to the surface of neurons, including axons. {ECO:0000250|UniProtKB:Q80WD0}

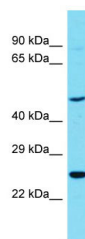
Tissue Location

Predominantly expressed in brain. Expressed at lower levels in kidney, lung, mammary gland, placenta, salivary gland, skeletal muscle and spleen.

References

Lauren J.,et al.Mol. Cell. Neurosci. 24:581-594(2003).
Pignot V.,et al.J. Neurochem. 85:717-728(2003).
Mural R.J.,et al.Submitted (SEP-2005) to the EMBL/GenBank/DDBJ databases.
Bechtel S.,et al.BMC Genomics 8:399-399(2007).
Barton W.A.,et al.EMBO J. 22:3291-3302(2003).

Images



Host: Rabbit
Target Name: RTN4RL1
Sample Tissue: OVCAR-3 Whole cell lysate
S
Antibody Dilution: 1.0µg/ml

Please note: All products are 'FOR RESEARCH USE ONLY. NOT FOR USE IN DIAGNOSTIC OR THERAPEUTIC PROCEDURES'.