

# Rtp3 Antibody - middle region

Rabbit Polyclonal Antibody

Catalog # AI15534

## Product Information

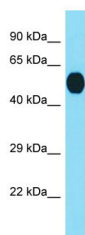
Application	WB
Primary Accession	<a href="#">B2RWS3</a>
Other Accession	<a href="#">NM_153100</a> , <a href="#">NP_694740</a>
Reactivity	Human, Mouse, Rat, Rabbit, Pig, Horse, Bovine
Predicted	Human, Mouse, Rat, Rabbit, Pig, Horse, Bovine
Host	Rabbit
Clonality	Polyclonal
Calculated MW	52 KDa

## Additional Information

Alias Symbol	Tmem7
Format	Liquid. Purified antibody supplied in 1x PBS buffer with 0.09% (w/v) sodium azide and 2% sucrose.
Reconstitution & Storage	Add 50 ul of distilled water. Final anti-Rtp3 antibody concentration is 1 mg/ml in PBS buffer with 2% sucrose. For longer periods of storage, store at 20°C. Avoid repeat freeze-thaw cycles.
Precautions	Rtp3 Antibody - middle region is for research use only and not for use in diagnostic or therapeutic procedures.

## Protein Information

## Images



Host: Rabbit  
Target Name: Rtp3  
Sample Tissue: Mouse Brain lysates  
Antibody Dilution: 1.0µg/ml