

SYT14 Antibody - middle region

Rabbit Polyclonal Antibody

Catalog # AI15538

Product Information

Application	WB
Primary Accession	Q8NB59
Other Accession	NM_153262 , NP_694994
Reactivity	Human, Mouse, Rat, Rabbit, Zebrafish, Pig, Dog, Guinea Pig, Horse, Bovine
Predicted	Human, Mouse, Rat, Rabbit, Zebrafish, Pig, Dog, Guinea Pig, Horse, Bovine
Host	Rabbit
Clonality	Polyclonal
Calculated MW	62287

Additional Information

Gene ID	255928
Alias Symbol	SCAR11, sytXIV
Other Names	Synaptotagmin-14, Synaptotagmin XIV, SytXIV, SYT14
Format	Liquid. Purified antibody supplied in 1x PBS buffer with 0.09% (w/v) sodium azide and 2% sucrose.
Reconstitution & Storage	Add 50 ul of distilled water. Final anti-SYT14 antibody concentration is 1 mg/ml in PBS buffer with 2% sucrose. For longer periods of storage, store at 20°C. Avoid repeat freeze-thaw cycles.
Precautions	SYT14 Antibody - middle region is for research use only and not for use in diagnostic or therapeutic procedures.

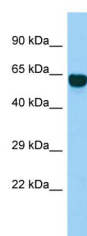
Protein Information

Name	SYT14
Function	May be involved in the trafficking and exocytosis of secretory vesicles in non-neuronal tissues. Is Ca(2+)-independent.
Cellular Location	Membrane; Single- pass type III membrane protein Note=Localized in perinuclear and submembranous regions
Tissue Location	Highly expressed in fetal and adult brain tissue.

References

Fukuda M.,et al.J. Biochem. 133:641-649(2003).
Craxton M.A.,et al.BMC Genomics 5:43-43(2004).
Ota T.,et al.Nat. Genet. 36:40-45(2004).
Gregory S.G.,et al.Nature 441:315-321(2006).
Doi H.,et al.Am. J. Hum. Genet. 89:320-327(2011).

Images



Host: Rabbit
Target Name: SYT14
Sample Tissue: Fetal Brain lysates
Antibody Dilution: 1.0µg/ml

Please note: All products are 'FOR RESEARCH USE ONLY. NOT FOR USE IN DIAGNOSTIC OR THERAPEUTIC PROCEDURES'.