

# YARS2 Antibody - C-terminal region

Rabbit Polyclonal Antibody

Catalog # AI15545

## Product Information

---

|                          |  |
|--------------------------|--|
| <b>Application</b>       | WB   |
| <b>Primary Accession</b> | <a href="#">Q9Y2Z4</a>   |
| <b>Other Accession</b>   | <a href="#">NM_001040436</a> , <a href="#">NP_001035526</a>    |
| <b>Reactivity</b>        | Human, Mouse, Rat, Rabbit, Pig, Dog, Guinea Pig, Horse, Bovine |
| <b>Predicted</b>         | Human, Mouse, Rat, Rabbit, Pig, Dog, Guinea Pig, Horse, Bovine |
| <b>Host</b>              | Rabbit   |
| <b>Clonality</b>         | Polyclonal   |
| <b>Calculated MW</b>     | 53199  |

## Additional Information

---

|                                     |  |
|-------------------------------------|--|
| <b>Gene ID</b>                      | 51067  |
| <b>Alias Symbol</b>                 | MLASA2, MT-TYRRS, TYRRS  |
| <b>Other Names</b>                  | Tyrosine--tRNA ligase, mitochondrial, 6.1.1.1, Tyrosyl-tRNA synthetase, TyrRS, YARS2   |
| <b>Format</b>                       | Liquid. Purified antibody supplied in 1x PBS buffer with 0.09% (w/v) sodium azide and 2% sucrose.  |
| <b>Reconstitution &amp; Storage</b> | Add 50 ul of distilled water. Final anti-YARS2 antibody concentration is 1 mg/ml in PBS buffer with 2% sucrose. For longer periods of storage, store at 20°C. Avoid repeat freeze-thaw cycles. |
| <b>Precautions</b>                  | YARS2 Antibody - C-terminal region is for research use only and not for use in diagnostic or therapeutic procedures.   |

## Protein Information

---

|                          |  |
|--------------------------|--|
| <b>Name</b>              | YARS2  |
| <b>Function</b>          | Catalyzes the attachment of tyrosine to tRNA(Tyr) in a two- step reaction: tyrosine is first activated by ATP to form Tyr-AMP and then transferred to the acceptor end of tRNA(Tyr). |
| <b>Cellular Location</b> | Mitochondrion matrix   |

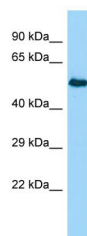
## References

---

Lai C.-H.,et al.Genome Res. 10:703-713(2000).  
Ota T.,et al.Nat. Genet. 36:40-45(2004).  
Scherer S.E.,et al.Nature 440:346-351(2006).  
Mural R.J.,et al.Submitted (SEP-2005) to the EMBL/GenBank/DDBJ databases.  
Bonfond L.,et al.Biochemistry 44:4805-4816(2005).

## Images

---



Host: Rabbit  
Target Name: YARS2  
Sample Tissue: MCF7 Whole cell lysate  
S  
Antibody Dilution: 1.0µg/ml

Please note: All products are 'FOR RESEARCH USE ONLY. NOT FOR USE IN DIAGNOSTIC OR THERAPEUTIC PROCEDURES'.