

AFAP1L1 Antibody - C-terminal region

Rabbit Polyclonal Antibody

Catalog # AI15551

Product Information

Application	WB
Primary Accession	Q8TED9
Other Accession	NM_001146337 , NP_001139809
Reactivity	Human, Mouse, Rat, Rabbit, Zebrafish, Pig, Dog, Guinea Pig, Horse, Bovine
Predicted	Human, Mouse, Rat, Rabbit, Zebrafish, Pig, Dog, Guinea Pig, Horse, Bovine
Host	Rabbit
Clonality	Polyclonal
Calculated MW	86432

Additional Information

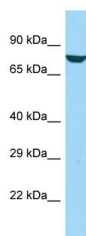
Gene ID	134265
Other Names	Actin filament-associated protein 1-like 1, AFAP1-like protein 1, AFAP1L1
Format	Liquid. Purified antibody supplied in 1x PBS buffer with 0.09% (w/v) sodium azide and 2% sucrose.
Reconstitution & Storage	Add 50 ul of distilled water. Final anti-AFAP1L1 antibody concentration is 1 mg/ml in PBS buffer with 2% sucrose. For longer periods of storage, store at 20°C. Avoid repeat freeze-thaw cycles.
Precautions	AFAP1L1 Antibody - C-terminal region is for research use only and not for use in diagnostic or therapeutic procedures.

Protein Information

Name	AFAP1L1
Function	May be involved in podosome and invadosome formation.
Cellular Location	Cytoplasm. Cell projection, podosome. Cell projection, invadopodium. Cytoplasm, cytoskeleton, stress fiber
Tissue Location	Expressed in breast, colon and brain. In all 3 tissues, expressed in the microvasculature (at protein level). In addition, in the breast, found in the contractile myoepithelial cell layer which surrounds the breast ducts (at protein level). In the colon, expressed in the mucous membrane and colonic crypts and in the smooth muscle cell layer which provide movement of the colon (at protein level). In the cerebellum, localized around the Purkinje neurons and the granule cells of the granular layer, but not inside cell bodies

(at protein level). Outside of the cerebellar cortex, expressed in glial cells (at protein level). Highly expressed away from the cell bodies within the dentate nucleus (at protein level)

Images



Host: Rabbit
Target Name: AFAP1L1
Sample Tissue: Jurkat Whole cell lysate
S
Antibody Dilution: 1.0µg/ml

Please note: All products are 'FOR RESEARCH USE ONLY. NOT FOR USE IN DIAGNOSTIC OR THERAPEUTIC PROCEDURES'.