

# ATAD3C Antibody - N-terminal region

Rabbit Polyclonal Antibody

Catalog # AI15555

## Product Information

---

<b>Application</b>	WB
<b>Primary Accession</b>	<a href="#">Q5T2N8</a>
<b>Other Accession</b>	<a href="#">NM_001039211</a> , <a href="#">NP_001034300</a>
<b>Reactivity</b>	Human, Mouse, Rat, Rabbit, Zebrafish, Pig, Dog, Guinea Pig, Horse, Bovine
<b>Predicted</b>	Human, Mouse, Rat, Rabbit, Zebrafish, Pig, Dog, Guinea Pig, Horse, Bovine
<b>Host</b>	Rabbit
<b>Clonality</b>	Polyclonal
<b>Calculated MW</b>	46380

## Additional Information

---

<b>Gene ID</b>	219293
<b>Other Names</b>	ATPase family AAA domain-containing protein 3C, ATAD3C
<b>Format</b>	Liquid. Purified antibody supplied in 1x PBS buffer with 0.09% (w/v) sodium azide and 2% sucrose.
<b>Reconstitution &amp; Storage</b>	Add 50 ul of distilled water. Final anti-ATAD3C antibody concentration is 1 mg/ml in PBS buffer with 2% sucrose. For longer periods of storage, store at 20°C. Avoid repeat freeze-thaw cycles.
<b>Precautions</b>	ATAD3C Antibody - N-terminal region is for research use only and not for use in diagnostic or therapeutic procedures.

## Protein Information

---

<b>Name</b>	ATAD3C
-------------	--------

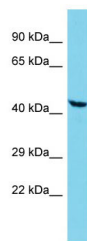
## References

---

Ota T.,et al.Nat. Genet. 36:40-45(2004).  
Gregory S.G.,et al.Nature 441:315-321(2006).

## Images

---



Host: Rabbit  
Target Name: ATAD3C  
Sample Tissue: A549 Whole cell lysate  
S  
Antibody Dilution: 1.0µg/ml

Please note: All products are 'FOR RESEARCH USE ONLY. NOT FOR USE IN DIAGNOSTIC OR THERAPEUTIC PROCEDURES'.