

BZW2 Antibody - N-terminal region

Rabbit Polyclonal Antibody

Catalog # AI15560

Product Information

Application	WB
Primary Accession	Q9Y6E2
Other Accession	NM_014038 , NP_054757
Reactivity	Human, Mouse, Rat, Rabbit, Zebrafish, Dog, Guinea Pig, Horse, Bovine
Predicted	Human, Mouse, Rat, Rabbit, Zebrafish, Pig, Dog, Guinea Pig, Horse, Bovine
Host	Rabbit
Clonality	Polyclonal
Calculated MW	48162

Additional Information

Gene ID	28969
Alias Symbol	MST017, MSTP017
Other Names	Basic leucine zipper and W2 domain-containing protein 2, BZW2
Format	Liquid. Purified antibody supplied in 1x PBS buffer with 0.09% (w/v) sodium azide and 2% sucrose.
Reconstitution & Storage	Add 50 ul of distilled water. Final anti-BZW2 antibody concentration is 1 mg/ml in PBS buffer with 2% sucrose. For longer periods of storage, store at 20°C. Avoid repeat freeze-thaw cycles.
Precautions	BZW2 Antibody - N-terminal region is for research use only and not for use in diagnostic or therapeutic procedures.

Protein Information

Name	BZW2
Synonyms	5MP1 {ECO:0000303 PubMed:21745818}
Function	Translation initiation regulator which represses non-AUG initiated translation and repeat-associated non-AUG (RAN) initiated translation by acting as a competitive inhibitor of eukaryotic translation initiation factor 5 (EIF5) function (PubMed: 21745818 , PubMed: 28981728 , PubMed: 29470543 , PubMed: 34260931). Increases the accuracy of translation initiation by impeding EIF5-dependent translation from non-AUG codons by competing with it for interaction with EIF2S2 within the 43S pre-initiation complex (PIC) in an EIF3C- binding dependent manner (PubMed: 21745818 , PubMed: 28981728 , PubMed: 34260931).

Cellular Location

Cytoplasm.

References

Zhao B.,et al.Submitted (DEC-1998) to the EMBL/GenBank/DDBJ databases.

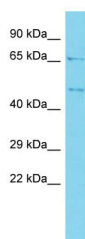
Zhang Q.-H.,et al.Genome Res. 10:1546-1560(2000).

Ota T.,et al.Nat. Genet. 36:40-45(2004).

Scherer S.W.,et al.Science 300:767-772(2003).

Mural R.J.,et al.Submitted (JUL-2005) to the EMBL/GenBank/DDBJ databases.

Images



Host: Rabbit

Target Name: BZW2

Sample Tissue: ACHN Whole cell lysate

S

Antibody Dilution: 1.0µg/ml BZW2 is supported by BioGPS gene expression data to be expressed in ACHN

Please note: All products are 'FOR RESEARCH USE ONLY. NOT FOR USE IN DIAGNOSTIC OR THERAPEUTIC PROCEDURES'.