

C7orf57 Antibody - C-terminal region

Rabbit Polyclonal Antibody

Catalog # AI15566

Product Information

Application	WB
Primary Accession	Q8NEG2
Other Accession	NM_001100159 , NP_001093629
Reactivity	Human, Rat, Dog, Guinea Pig, Horse, Bovine
Predicted	Human, Rat, Pig, Dog, Guinea Pig, Horse, Bovine
Host	Rabbit
Clonality	Polyclonal
Calculated MW	32846

Additional Information

Gene ID	136288
Other Names	Uncharacterized protein C7orf57, C7orf57
Format	Liquid. Purified antibody supplied in 1x PBS buffer with 0.09% (w/v) sodium azide and 2% sucrose.
Reconstitution & Storage	Add 50 ul of distilled water. Final anti-C7orf57 antibody concentration is 1 mg/ml in PBS buffer with 2% sucrose. For longer periods of storage, store at 20°C. Avoid repeat freeze-thaw cycles.
Precautions	C7orf57 Antibody - C-terminal region is for research use only and not for use in diagnostic or therapeutic procedures.

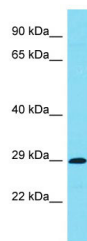
Protein Information

Name	C7orf57
-------------	---------

References

Hillier L.W., et al. Nature 424:157-164(2003).

Images



Target Name: C7orf57
Sample Tissue: Jurkat Whole cell lysate
S
Antibody Dilution: 1.0µg/ml

Please note: All products are 'FOR RESEARCH USE ONLY. NOT FOR USE IN DIAGNOSTIC OR THERAPEUTIC PROCEDURES'.