

C10orf88 Antibody - C-terminal region

Rabbit Polyclonal Antibody

Catalog # AI15570

Product Information

Application	WB
Primary Accession	Q9H8K7
Other Accession	NM_024942 , NP_079218
Reactivity	Human
Predicted	Human
Host	Rabbit
Clonality	Polyclonal
Calculated MW	49249

Additional Information

Gene ID	80007
Other Names	Uncharacterized protein C10orf88, C10orf88
Format	Liquid. Purified antibody supplied in 1x PBS buffer with 0.09% (w/v) sodium azide and 2% sucrose.
Reconstitution & Storage	Add 50 ul of distilled water. Final anti-C10orf88 antibody concentration is 1 mg/ml in PBS buffer with 2% sucrose. For longer periods of storage, store at 20°C. Avoid repeat freeze-thaw cycles.
Precautions	C10orf88 Antibody - C-terminal region is for research use only and not for use in diagnostic or therapeutic procedures.

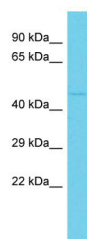
Protein Information

Name	PAAT {ECO:0000303 PubMed:25063848}
Function	ATPase that regulates mitochondrial ABC transporters ABCB7, ABCB8/MITOSUR and ABCB10 (PubMed: 25063848). Regulates mitochondrial ferric concentration and heme biosynthesis and plays a role in the maintenance of mitochondrial homeostasis and cell survival (PubMed: 25063848).
Cellular Location	Cytoplasm. Mitochondrion

References

Ota T.,et al.Nat. Genet. 36:40-45(2004).
Mayya V.,et al.Sci. Signal. 2:RA46-RA46(2009).

Images



Host: Rabbit

Target Name: C10orf88

Sample Tissue: HCT15 Whole cell lysate

S

Antibody Dilution: 1.0µg/ml C10orf88 is supported by
BioGPS gene expression data to be expressed in HCT15

Please note: All products are 'FOR RESEARCH USE ONLY. NOT FOR USE IN DIAGNOSTIC OR THERAPEUTIC PROCEDURES'.