

C11orf70 Antibody - C-terminal region

Rabbit Polyclonal Antibody

Catalog # AI15571

Product Information

Application	WB
Primary Accession	Q9BRQ4
Other Accession	NM_032930 , NP_116319
Reactivity	Human, Mouse, Rat, Rabbit, Pig, Dog, Guinea Pig, Horse, Bovine
Predicted	Human, Mouse, Rat, Rabbit, Pig, Dog, Guinea Pig, Horse, Bovine
Host	Rabbit
Clonality	Polyclonal
Calculated MW	30859

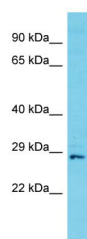
Additional Information

Gene ID	85016
Other Names	Uncharacterized protein C11orf70, C11orf70
Format	Liquid. Purified antibody supplied in 1x PBS buffer with 0.09% (w/v) sodium azide and 2% sucrose.
Reconstitution & Storage	Add 50 ul of distilled water. Final anti-C11orf70 antibody concentration is 1 mg/ml in PBS buffer with 2% sucrose. For longer periods of storage, store at 20°C. Avoid repeat freeze-thaw cycles.
Precautions	C11orf70 Antibody - C-terminal region is for research use only and not for use in diagnostic or therapeutic procedures.

Protein Information

Name	CFAP300 (HGNC:28188)
Synonyms	C11orf70
Function	Cilium- and flagellum-specific protein that plays a role in axonemal structure organization and motility. May play a role in outer and inner dynein arm assembly.
Cellular Location	Cytoplasm {ECO:0000250 UniProtKB:A0CY51}. Cytoplasm, cytoskeleton, cilium axoneme {ECO:0000250 UniProtKB:A0CY51}
Tissue Location	Expressed in nasal epithelial cells.

Images



Host: Rabbit
Target Name: C11orf70
Sample Tissue: Jurkat Whole cell lysate
S
Antibody Dilution: 1.0µg/ml

Please note: All products are 'FOR RESEARCH USE ONLY. NOT FOR USE IN DIAGNOSTIC OR THERAPEUTIC PROCEDURES'.