

C12orf56 Antibody - N-terminal region

Rabbit Polyclonal Antibody

Catalog # AI15573

Product Information

Application	WB
Primary Accession	Q8IXR9
Other Accession	NM_001170633 , NP_001164104
Reactivity	Human, Mouse
Predicted	Human, Mouse
Host	Rabbit
Clonality	Polyclonal
Calculated MW	71046

Additional Information

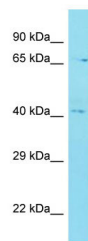
Gene ID	115749
Other Names	Uncharacterized protein C12orf56, C12orf56
Format	Liquid. Purified antibody supplied in 1x PBS buffer with 0.09% (w/v) sodium azide and 2% sucrose.
Reconstitution & Storage	Add 50 ul of distilled water. Final anti-C12orf56 antibody concentration is 1 mg/ml in PBS buffer with 2% sucrose. For longer periods of storage, store at 20°C. Avoid repeat freeze-thaw cycles.
Precautions	C12orf56 Antibody - N-terminal region is for research use only and not for use in diagnostic or therapeutic procedures.

Protein Information

Name	C12orf56
-------------	----------

Images

Host: Rabbit
Target Name: C12orf56
Sample Tissue: MDA-MB-435S Whole cell lysate
s
Antibody Dilution: 1.0µg/ml



Please note: All products are 'FOR RESEARCH USE ONLY. NOT FOR USE IN DIAGNOSTIC OR THERAPEUTIC PROCEDURES'.