

CABS1 Antibody - N-terminal region

Rabbit Polyclonal Antibody

Catalog # AI15580

Product Information

Application	WB
Primary Accession	Q96KC9
Other Accession	NM_033122 , NP_149113
Reactivity	Human
Predicted	Human
Host	Rabbit
Clonality	Polyclonal
Calculated MW	43003

Additional Information

Gene ID	85438
Alias Symbol	C4orf35, CLPH, NYD-SP26
Other Names	Calcium-binding and spermatid-specific protein 1, Testis development protein NYD-SP26, CABS1, C4orf35
Format	Liquid. Purified antibody supplied in 1x PBS buffer with 0.09% (w/v) sodium azide and 2% sucrose.
Reconstitution & Storage	Add 50 ul of distilled water. Final anti-CABS1 antibody concentration is 1 mg/ml in PBS buffer with 2% sucrose. For longer periods of storage, store at 20°C. Avoid repeat freeze-thaw cycles.
Precautions	CABS1 Antibody - N-terminal region is for research use only and not for use in diagnostic or therapeutic procedures.

Protein Information

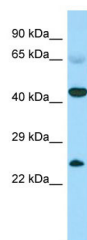
Name	CABS1
Synonyms	C4orf35
Function	Calcium-binding protein (By similarity). Essential for maintaining the structural integrity of the sperm flagella (By similarity).
Cellular Location	Cytoplasm {ECO:0000250 UniProtKB:Q68FX6}. Mitochondrion inner membrane {ECO:0000250 UniProtKB:Q68FX6}. Cell projection, cilium, flagellum {ECO:0000250 UniProtKB:Q8C633} Cytoplasmic vesicle, secretory vesicle, acrosome {ECO:0000250 UniProtKB:Q8C633}. Note=Mostly cytoplasmic, but associated with the mitochondrial inner membrane during

the last steps of spermatid differentiation. Localizes to the principal piece of the sperm flagellum (By similarity). {ECO:0000250|UniProtKB:Q68FX6, ECO:0000250|UniProtKB:Q8C633}

References

Sha J.H.,et al.Submitted (MAY-2001) to the EMBL/GenBank/DDBJ databases.
Ota T.,et al.Nat. Genet. 36:40-45(2004).
Hillier L.W.,et al.Nature 434:724-731(2005).
Mural R.J.,et al.Submitted (JUL-2005) to the EMBL/GenBank/DDBJ databases.

Images



Host: Rabbit
Target Name: CABS1
Sample Tissue: Fetal Heart lysates
Antibody Dilution: 1.0µg/ml

Please note: All products are 'FOR RESEARCH USE ONLY. NOT FOR USE IN DIAGNOSTIC OR THERAPEUTIC PROCEDURES'.