

CCDC85A Antibody - N-terminal region

Rabbit Polyclonal Antibody

Catalog # AI15583

Product Information

Application	WB
Primary Accession	Q96PX6
Other Accession	NM_001080433 , NP_001073902
Reactivity	Human, Mouse, Rat, Rabbit, Zebrafish, Pig, Guinea Pig, Horse, Bovine
Predicted	Human, Mouse, Rat, Rabbit, Zebrafish, Pig, Guinea Pig, Horse, Bovine
Host	Rabbit
Clonality	Polyclonal
Calculated MW	59976

Additional Information

Gene ID	114800
Other Names	Coiled-coil domain-containing protein 85A, CCDC85A, KIAA1912
Format	Liquid. Purified antibody supplied in 1x PBS buffer with 0.09% (w/v) sodium azide and 2% sucrose.
Reconstitution & Storage	Add 50 ul of distilled water. Final anti-CCDC85A antibody concentration is 1 mg/ml in PBS buffer with 2% sucrose. For longer periods of storage, store at 20°C. Avoid repeat freeze-thaw cycles.
Precautions	CCDC85A Antibody - N-terminal region is for research use only and not for use in diagnostic or therapeutic procedures.

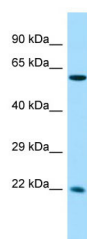
Protein Information

Name	CCDC85A
Synonyms	KIAA1912
Function	May play a role in cell-cell adhesion and epithelium development through its interaction with proteins of the beta-catenin family.
Cellular Location	Cell junction, adherens junction

References

Nagase T., et al. DNA Res. 8:179-187(2001).

Images



Host: Rabbit
Target Name: CCDC85A
Sample Tissue: Fetal Liver lysates
Antibody Dilution: 1.0µg/ml

Please note: All products are 'FOR RESEARCH USE ONLY. NOT FOR USE IN DIAGNOSTIC OR THERAPEUTIC PROCEDURES'.