

CCDC92 Antibody - N-terminal region

Rabbit Polyclonal Antibody

Catalog # AI15585

Product Information

Application	WB
Primary Accession	Q53HC0
Other Accession	NM_025140 , NP_079416
Reactivity	Human, Rabbit, Dog, Horse, Bovine
Predicted	Human, Rabbit, Dog, Horse, Bovine
Host	Rabbit
Clonality	Polyclonal
Calculated MW	36961

Additional Information

Gene ID	80212
Other Names	Coiled-coil domain-containing protein 92, Limkain beta-2, CCDC92
Format	Liquid. Purified antibody supplied in 1x PBS buffer with 0.09% (w/v) sodium azide and 2% sucrose.
Reconstitution & Storage	Add 50 μ l of distilled water. Final Anti-CCDC92 antibody concentration is 1 mg/ml in PBS buffer with 2% sucrose. For longer periods of storage, store at -20°C. Avoid repeat freeze-thaw cycles.
Precautions	CCDC92 Antibody - N-terminal region is for research use only and not for use in diagnostic or therapeutic procedures.

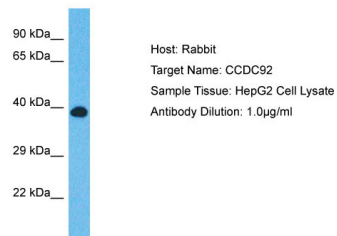
Protein Information

Name	CCDC92
Function	Interferon-stimulated protein that plays a role in innate immunity. Strongly inhibits ebolavirus transcription and replication. Forms a complex with viral RNA-bound nucleocapsid NP and thereby prevents the transport of NP to the cell surface.
Cellular Location	Cytoplasm, cytoskeleton, microtubule organizing center, centrosome, centriole. Cytoplasm

References

Miyamoto K.,et al.Submitted (JUN-1998) to the EMBL/GenBank/DDBJ databases.
Ota T.,et al.Nat. Genet. 36:40-45(2004).
Suzuki Y.,et al.Submitted (APR-2005) to the EMBL/GenBank/DDBJ databases.
Scherer S.E.,et al.Nature 440:346-351(2006).
Chaki M.,et al.Cell 150:533-548(2012).

Images



Host: Rabbit
Target Name: CCDC92
Sample Tissue: HepG2 Whole cell lysate
S
Antibody Dilution: 1.0µg/mlCCDC92 is supported by
BioGPS gene expression data to be expressed in HepG2

Please note: All products are 'FOR RESEARCH USE ONLY. NOT FOR USE IN DIAGNOSTIC OR THERAPEUTIC PROCEDURES'.