

CCDC135 Antibody - C-terminal region

Rabbit Polyclonal Antibody

Catalog # AI15586

Product Information

Application	WB
Primary Accession	Q8IY82
Other Accession	NM_032269 , NP_115645
Reactivity	Human, Mouse, Rat, Rabbit, Pig, Dog, Guinea Pig, Horse, Bovine
Predicted	Human, Mouse, Rat, Rabbit, Pig, Dog, Guinea Pig, Horse, Bovine
Host	Rabbit
Clonality	Polyclonal
Calculated MW	103497

Additional Information

Gene ID	84229
Alias Symbol	C16orf50
Other Names	Coiled-coil domain-containing protein lobo homolog, Coiled-coil domain-containing protein 135, CCDC135, C16orf50
Format	Liquid. Purified antibody supplied in 1x PBS buffer with 0.09% (w/v) sodium azide and 2% sucrose.
Reconstitution & Storage	Add 50 ul of distilled water. Final anti-CCDC135 antibody concentration is 1 mg/ml in PBS buffer with 2% sucrose. For longer periods of storage, store at 20°C. Avoid repeat freeze-thaw cycles.
Precautions	CCDC135 Antibody - C-terminal region is for research use only and not for use in diagnostic or therapeutic procedures.

Protein Information

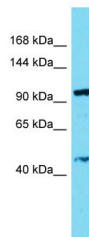
Name	DRC7
Synonyms	C16orf50, CCDC135
Function	Component of the nexin-dynein regulatory complex (N-DRC) a key regulator of ciliary/flagellar motility which maintains the alignment and integrity of the distal axoneme and regulates microtubule sliding in motile axonemes (By similarity). Involved in the regulation of flagellar motility (By similarity). Essential for male fertility, sperm head morphogenesis and sperm flagellum formation (By similarity).
Cellular Location	Cell projection, cilium, flagellum {ECO:0000250 UniProtKB:A8JAM0}.

Cytoplasm, cytoskeleton, cilium axoneme {ECO:0000250|UniProtKB:A8JAM0}.
Cytoplasm, cytoskeleton, flagellum axoneme
{ECO:0000250|UniProtKB:A8JAM0}. Note=Associated with the outer doublet
microtubules (OD). {ECO:0000250|UniProtKB:A8JAM0}

References

Ota T.,et al.Nat. Genet. 36:40-45(2004).
Martin J.,et al.Nature 432:988-994(2004).
Wiemann S.,et al.Genome Res. 11:422-435(2001).

Images



Host: Rabbit
Target Name: CCDC135
Sample Tissue: THP-1 Whole cell lysate
S
Antibody Dilution: 1.0µg/ml

Please note: All products are 'FOR RESEARCH USE ONLY. NOT FOR USE IN DIAGNOSTIC OR THERAPEUTIC PROCEDURES'.