

CES4A Antibody - C-terminal region

Rabbit Polyclonal Antibody

Catalog # AI15587

Product Information

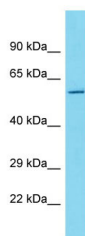
Application	WB
Primary Accession	F5H5S4
Reactivity	Human, Mouse, Rat, Rabbit, Guinea Pig, Horse, Bovine
Predicted	Human, Mouse, Rat, Rabbit, Guinea Pig, Bovine
Host	Rabbit
Clonality	Polyclonal
Calculated MW	56 kDa

Additional Information

Format	Liquid. Purified antibody supplied in 1x PBS buffer with 0.09% (w/v) sodium azide and 2% sucrose.
Reconstitution & Storage	Add 50 ul of distilled water. Final anti-CES4A antibody concentration is 1 mg/ml in PBS buffer with 2% sucrose. For longer periods of storage, store at 20°C. Avoid repeat freeze-thaw cycles.
Precautions	CES4A Antibody - C-terminal region is for research use only and not for use in diagnostic or therapeutic procedures.

Protein Information

Images



Host: Rabbit
Target Name: CES4A
Sample Tissue: PANC1 Whole cell lysate
S
Antibody Dilution: 1.0µg/ml

Please note: All products are 'FOR RESEARCH USE ONLY. NOT FOR USE IN DIAGNOSTIC OR THERAPEUTIC PROCEDURES'.