

EFTUD1 Antibody - C-terminal region

Rabbit Polyclonal Antibody

Catalog # AI15602

Product Information

Application	WB
Primary Accession	Q7Z2Z2
Other Accession	NM_001040610 , NP_001035700
Reactivity	Human, Mouse, Rat, Rabbit, Zebrafish, Dog, Guinea Pig, Horse, Bovine
Predicted	Human, Mouse, Rat, Rabbit, Zebrafish, Pig, Dog, Guinea Pig, Horse, Bovine
Host	Rabbit
Clonality	Polyclonal
Calculated MW	125430

Additional Information

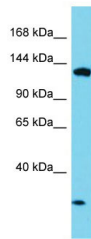
Gene ID	79631
Alias Symbol	FAM42A, HsT19294, RIA1
Other Names	Elongation factor Tu GTP-binding domain-containing protein 1, Elongation factor-like 1, Protein FAM42A, EFTUD1, EFL1, FAM42A
Format	Liquid. Purified antibody supplied in 1x PBS buffer with 0.09% (w/v) sodium azide and 2% sucrose.
Reconstitution & Storage	Add 50 ul of distilled water. Final anti-EFTUD1 antibody concentration is 1 mg/ml in PBS buffer with 2% sucrose. For longer periods of storage, store at 20°C. Avoid repeat freeze-thaw cycles.
Precautions	EFTUD1 Antibody - C-terminal region is for research use only and not for use in diagnostic or therapeutic procedures.

Protein Information

Name	EFL1 (HGNC:25789)
Synonyms	EFTUD1, FAM42A
Function	GTPase involved in the biogenesis of the 60S ribosomal subunit and translational activation of ribosomes. Together with SBDS, triggers the GTP-dependent release of EIF6 from 60S pre-ribosomes in the cytoplasm, thereby activating ribosomes for translation competence by allowing 80S ribosome assembly and facilitating EIF6 recycling to the nucleus, where it is required for 60S rRNA processing and nuclear export.
Tissue Location	Expressed at low levels in brain. Expression is highly increased in glioma

tissues.

Images



Host: Rabbit
Target Name: EFTUD1
Sample Tissue: HepG2 Whole cell lysate
S
Antibody Dilution: 1.0µg/ml

Please note: All products are 'FOR RESEARCH USE ONLY. NOT FOR USE IN DIAGNOSTIC OR THERAPEUTIC PROCEDURES'.