

# EFTUD1 Antibody - N-terminal region

Rabbit Polyclonal Antibody

Catalog # AI15603

## Product Information

---

<b>Application</b>	WB
<b>Primary Accession</b>	<a href="#">Q7Z2Z2</a>
<b>Other Accession</b>	<a href="#">NM_001040610</a> , <a href="#">NP_001035700</a>
<b>Reactivity</b>	Human, Mouse, Rat, Rabbit, Dog, Guinea Pig, Horse, Bovine
<b>Predicted</b>	Human, Mouse, Rat, Rabbit, Pig, Dog, Guinea Pig, Horse, Bovine
<b>Host</b>	Rabbit
<b>Clonality</b>	Polyclonal
<b>Calculated MW</b>	125430

## Additional Information

---

<b>Gene ID</b>	79631
<b>Alias Symbol</b>	FAM42A, HsT19294, RIA1
<b>Other Names</b>	Elongation factor Tu GTP-binding domain-containing protein 1, Elongation factor-like 1, Protein FAM42A, EFTUD1, EFL1, FAM42A
<b>Format</b>	Liquid. Purified antibody supplied in 1x PBS buffer with 0.09% (w/v) sodium azide and 2% sucrose.
<b>Reconstitution &amp; Storage</b>	Add 50 ul of distilled water. Final anti-EFTUD1 antibody concentration is 1 mg/ml in PBS buffer with 2% sucrose. For longer periods of storage, store at 20°C. Avoid repeat freeze-thaw cycles.
<b>Precautions</b>	EFTUD1 Antibody - N-terminal region is for research use only and not for use in diagnostic or therapeutic procedures.

## Protein Information

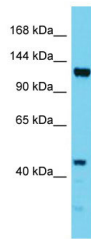
---

<b>Name</b>	EFL1 ( <a href="#">HGNC:25789</a> )
<b>Synonyms</b>	EFTUD1, FAM42A
<b>Function</b>	GTPase involved in the biogenesis of the 60S ribosomal subunit and translational activation of ribosomes. Together with SBDS, triggers the GTP-dependent release of EIF6 from 60S pre-ribosomes in the cytoplasm, thereby activating ribosomes for translation competence by allowing 80S ribosome assembly and facilitating EIF6 recycling to the nucleus, where it is required for 60S rRNA processing and nuclear export.
<b>Tissue Location</b>	Expressed at low levels in brain. Expression is highly increased in glioma

tissues.

## Images

---



Host: Rabbit  
Target Name: EFTUD1  
Sample Tissue: HepG2 Whole cell lysate  
S  
Antibody Dilution: 1.0µg/ml

Please note: All products are 'FOR RESEARCH USE ONLY. NOT FOR USE IN DIAGNOSTIC OR THERAPEUTIC PROCEDURES'.