

Eps15l1 Antibody - C-terminal region

Rabbit Polyclonal Antibody

Catalog # AI15604

Product Information

Application	WB
Primary Accession	Q60902
Other Accession	NM_007944 , NP_031970
Reactivity	Human, Mouse, Rat, Dog, Guinea Pig, Horse, Bovine
Predicted	Human, Mouse, Rat, Pig, Dog, Guinea Pig, Horse, Bovine
Host	Rabbit
Clonality	Polyclonal
Calculated MW	99309

Additional Information

Gene ID	13859
Alias Symbol	9830147J04Rik, AI593686, Eps15-rs, Eps15R
Other Names	Epidermal growth factor receptor substrate 15-like 1, Epidermal growth factor receptor pathway substrate 15-related sequence, Eps15-rs, Eps15-related protein, Eps15R, Eps15l1, Eps15-rs, Eps15R
Format	Liquid. Purified antibody supplied in 1x PBS buffer with 0.09% (w/v) sodium azide and 2% sucrose.
Reconstitution & Storage	Add 50 ul of distilled water. Final anti-Eps15l1 antibody concentration is 1 mg/ml in PBS buffer with 2% sucrose. For longer periods of storage, store at 20°C. Avoid repeat freeze-thaw cycles.
Precautions	Eps15l1 Antibody - C-terminal region is for research use only and not for use in diagnostic or therapeutic procedures.

Protein Information

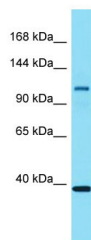
Name	Eps15l1
Synonyms	Eps15-rs, Eps15R
Function	Seems to be a constitutive component of clathrin-coated pits that is required for receptor-mediated endocytosis. Involved in endocytosis of integrin beta-1 (ITGB1) and transferrin receptor (TFR); internalization of ITGB1 as DAB2-dependent cargo but not TFR seems to require association with DAB2 (By similarity).
Cellular Location	Cell membrane; Peripheral membrane protein. Nucleus. Membrane, coated

pit. Note=Localized to plasma membrane coated pits

References

Wong W.T.,et al.Proc. Natl. Acad. Sci. U.S.A. 92:9530-9534(1995).
Carninci P.,et al.Science 309:1559-1563(2005).
Mural R.J.,et al.Submitted (JUL-2005) to the EMBL/GenBank/DBJ databases.
Coda L.,et al.J. Biol. Chem. 273:3003-3012(1998).
Rush J.,et al.Nat. Biotechnol. 23:94-101(2005).

Images



Host: Rabbit
Target Name: Eps15l1
Sample Tissue: Mouse Spleen lysates
Antibody Dilution: 1.0µg/ml

Please note: All products are 'FOR RESEARCH USE ONLY. NOT FOR USE IN DIAGNOSTIC OR THERAPEUTIC PROCEDURES'.