

FERMT2 Antibody - C-terminal region

Rabbit Polyclonal Antibody

Catalog # AI15612

Product Information

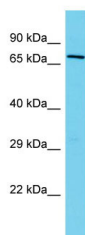
Application	WB
Primary Accession	Q96AC1-3
Other Accession	NM_006832 , NP_006823
Reactivity	Human, Mouse, Rat, Rabbit, Zebrafish, Pig, Dog, Guinea Pig, Horse, Bovine
Predicted	Human, Mouse, Rat, Rabbit, Zebrafish, Pig, Dog, Guinea Pig, Horse, Bovine
Host	Rabbit
Clonality	Polyclonal
Calculated MW	75 kDa

Additional Information

Alias Symbol	KIND2, MIG2, PLEKHC1, UNC112, UNC112B, mig-2
Format	Liquid. Purified antibody supplied in 1x PBS buffer with 0.09% (w/v) sodium azide and 2% sucrose.
Reconstitution & Storage	Add 50 ul of distilled water. Final anti-FERMT2 antibody concentration is 1 mg/ml in PBS buffer with 2% sucrose. For longer periods of storage, store at 20°C. Avoid repeat freeze-thaw cycles.
Precautions	FERMT2 Antibody - C-terminal region is for research use only and not for use in diagnostic or therapeutic procedures.

Protein Information

Images



Host: Rabbit
Target Name: FERMT2
Sample Tissue: HT1080 Whole cell lysate
S
Antibody Dilution: 1.0µg/ml FERMT2 is strongly supported by BioGPS gene expression data to be expressed in Human HT1080 cells