

# NXPH2 Antibody - C-terminal region

Rabbit Polyclonal Antibody

Catalog # AI15628

## Product Information

---

<b>Application</b>	WB
<b>Primary Accession</b>	<a href="#">O95156</a>
<b>Other Accession</b>	<a href="#">NM_007226</a> , <a href="#">NP_009157</a>
<b>Reactivity</b>	Human, Mouse, Rat, Rabbit, Zebrafish, Pig, Dog, Guinea Pig, Horse, Bovine
<b>Predicted</b>	Human, Mouse, Rat, Rabbit, Zebrafish, Pig, Dog, Guinea Pig, Horse, Bovine
<b>Host</b>	Rabbit
<b>Clonality</b>	Polyclonal
<b>Calculated MW</b>	29938

## Additional Information

---

<b>Gene ID</b>	11249
<b>Alias Symbol</b>	NPH2
<b>Other Names</b>	Neurexophilin-2, NXPH2, NPH2
<b>Format</b>	Liquid. Purified antibody supplied in 1x PBS buffer with 0.09% (w/v) sodium azide and 2% sucrose.
<b>Reconstitution &amp; Storage</b>	Add 50 ul of distilled water. Final anti-NXPH2 antibody concentration is 1 mg/ml in PBS buffer with 2% sucrose. For longer periods of storage, store at 20°C. Avoid repeat freeze-thaw cycles.
<b>Precautions</b>	NXPH2 Antibody - C-terminal region is for research use only and not for use in diagnostic or therapeutic procedures.

## Protein Information

---

<b>Name</b>	NXPH2
<b>Synonyms</b>	NPH2
<b>Function</b>	May be signaling molecules that resemble neuropeptides and that act by binding to alpha-neurexins and possibly other receptors.
<b>Cellular Location</b>	Secreted.
<b>Tissue Location</b>	Expressed in brain and kidney.

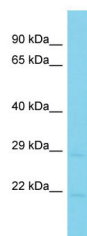
## References

---

Kawasaki A.,et al.Submitted (FEB-2004) to the EMBL/GenBank/DDBJ databases.  
Hillier L.W.,et al.Nature 434:724-731(2005).  
Missler M.,et al.J. Neurosci. 18:3630-3638(1998).

## Images

---



Host: Rabbit  
Target Name: NXPH2  
Sample Tissue: Placenta lysates  
Antibody Dilution: 1.0µg/ml

Please note: All products are 'FOR RESEARCH USE ONLY. NOT FOR USE IN DIAGNOSTIC OR THERAPEUTIC PROCEDURES'.