

# WDR43 Antibody - N-terminal region

Rabbit Polyclonal Antibody

Catalog # AI15629

## Product Information

---

Application	WB
Primary Accession	<a href="#">Q15061</a>
Other Accession	<a href="#">NP_055946</a>
Reactivity	Human
Host	Rabbit
Clonality	Polyclonal
Calculated MW	74891

## Additional Information

---

Gene ID	23160
Alias Symbol Other Names	WDR43, KIAA0007, UTP5, WD repeat-containing protein 43, WDR43, KIAA0007, UTP5
Format	Liquid. Purified antibody supplied in 1x PBS buffer with 0.09% (w/v) sodium azide and 2% sucrose.
Reconstitution & Storage	Add 50 $\mu$ l of distilled water. Final Anti-WDR43 antibody concentration is 1 mg/ml in PBS buffer with 2% sucrose. For longer periods of storage, store at -20°C. Avoid repeat freeze-thaw cycles.
Precautions	WDR43 Antibody - N-terminal region is for research use only and not for use in diagnostic or therapeutic procedures.

## Protein Information

---

Name	WDR43 ( <a href="#">HGNC:28945</a> )
Synonyms	KIAA0007, UTP5
Function	Ribosome biogenesis factor that coordinates hyperactive transcription and ribogenesis (PubMed: <a href="#">17699751</a> ). Part of the small subunit (SSU) processome, first precursor of the small eukaryotic ribosomal subunit. During the assembly of the SSU processome in the nucleolus, many ribosome biogenesis factors, an RNA chaperone and ribosomal proteins associate with the nascent pre-rRNA and work in concert to generate RNA folding, modifications, rearrangements and cleavage as well as targeted degradation of pre-ribosomal RNA by the RNA exosome. Involved in nucleolar processing of pre-18S ribosomal RNA. Required for optimal pre-ribosomal RNA transcription by RNA polymerase I (PubMed: <a href="#">17699751</a> , PubMed: <a href="#">34516797</a> ).

Essential for stem cell pluripotency and embryonic development. In the nucleoplasm, recruited by promoter-associated/nascent transcripts and transcription to active promoters where it facilitates releases of elongation factor P-TEFb and paused RNA polymerase II to allow transcription elongation and maintain high-level expression of its targets genes (By similarity).

#### Cellular Location

Nucleus, nucleolus. Nucleus, nucleolus fibrillar center. Nucleus, nucleoplasm {ECO:0000250|UniProtKB:Q6ZQL4}

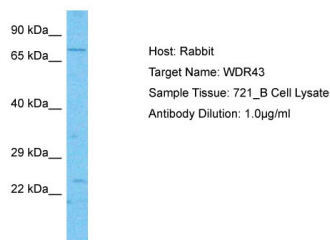
## References

---

Nomura N.,et al.DNA Res. 1:27-35(1994).  
Scherl A.,et al.Mol. Biol. Cell 13:4100-4109(2002).  
Olsen J.V.,et al.Cell 127:635-648(2006).  
Beausoleil S.A.,et al.Nat. Biotechnol. 24:1285-1292(2006).  
Dephoure N.,et al.Proc. Natl. Acad. Sci. U.S.A. 105:10762-10767(2008).

## Images

---



Host: Rabbit  
Target Name: WDR43  
Sample Tissue: 721\_B Cell Lysate  
Antibody Dilution: 1.0µg/ml

Host: Rabbit  
Target Name: WDR43  
Sample Tissue: 721\_B Whole Cell lysates  
Antibody Dilution: 1.0µg/ml

Please note: All products are 'FOR RESEARCH USE ONLY. NOT FOR USE IN DIAGNOSTIC OR THERAPEUTIC PROCEDURES'.