

# RRP8 Antibody - N-terminal region

Rabbit Polyclonal Antibody

Catalog # AI15630

## Product Information

---

<b>Application</b>	WB
<b>Primary Accession</b>	<a href="#">O43159</a>
<b>Other Accession</b>	<a href="#">NM_015324</a> , <a href="#">NP_056139</a>
<b>Reactivity</b>	Human, Rat, Rabbit, Dog, Guinea Pig, Horse, Bovine, Yeast
<b>Predicted</b>	Human, Rat, Rabbit, Pig, Dog, Guinea Pig, Horse, Bovine, Yeast
<b>Host</b>	Rabbit
<b>Clonality</b>	Polyclonal
<b>Calculated MW</b>	50715

## Additional Information

---

<b>Gene ID</b>	23378
<b>Alias Symbol</b>	KIAA0409
<b>Other Names</b>	Ribosomal RNA-processing protein 8, 2.1.1.-, Cerebral protein 1, Nucleomethylin, RRP8, KIAA0409, NML
<b>Format</b>	Liquid. Purified antibody supplied in 1x PBS buffer with 0.09% (w/v) sodium azide and 2% sucrose.
<b>Reconstitution &amp; Storage</b>	Add 50 ul of distilled water. Final anti-RRP8 antibody concentration is 1 mg/ml in PBS buffer with 2% sucrose. For longer periods of storage, store at 20°C. Avoid repeat freeze-thaw cycles.
<b>Precautions</b>	RRP8 Antibody - N-terminal region is for research use only and not for use in diagnostic or therapeutic procedures.

## Protein Information

---

<b>Name</b>	RRP8
<b>Synonyms</b>	KIAA0409, NML
<b>Function</b>	Essential component of the eNoSC (energy-dependent nucleolar silencing) complex, a complex that mediates silencing of rDNA in response to intracellular energy status and acts by recruiting histone- modifying enzymes. The eNoSC complex is able to sense the energy status of cell: upon glucose starvation, elevation of NAD(+)/NADP(+) ratio activates SIRT1, leading to histone H3 deacetylation followed by dimethylation of H3 at 'Lys-9' (H3K9me2) by SUV39H1 and the formation of silent chromatin in the rDNA locus. In the complex, RRP8 binds to H3K9me2 and probably acts as a

methyltransferase. Its substrates are however unknown.

## Cellular Location

Nucleus, nucleolus Note=Localizes at rDNA locus

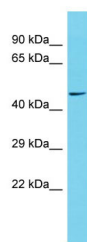
## References

---

Yazaki M.,et al.Submitted (AUG-1996) to the EMBL/GenBank/DDBJ databases.  
Ishikawa K.,et al.DNA Res. 4:307-313(1997).  
Scherl A.,et al.Mol. Biol. Cell 13:4100-4109(2002).  
Andersen J.S.,et al.Curr. Biol. 12:1-11(2002).  
Olsen J.V.,et al.Cell 127:635-648(2006).

## Images

---



Host: Rabbit  
Target Name: RRP8  
Sample Tissue: Placenta lysates  
Antibody Dilution: 1.0µg/ml

Please note: All products are 'FOR RESEARCH USE ONLY. NOT FOR USE IN DIAGNOSTIC OR THERAPEUTIC PROCEDURES'.