

CCDC41 Antibody - C-terminal region

Rabbit Polyclonal Antibody

Catalog # AI15637

Product Information

Application	WB
Primary Accession	Q9Y592
Other Accession	NM_016122 , NP_057206
Reactivity	Human, Mouse, Rat, Rabbit, Dog, Guinea Pig, Horse, Bovine
Predicted	Human, Mouse, Rat, Rabbit, Pig, Dog, Guinea Pig, Horse, Bovine
Host	Rabbit
Clonality	Polyclonal
Calculated MW	82940

Additional Information

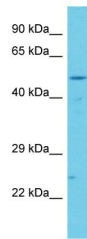
Gene ID	51134
Alias Symbol	NY-REN-58
Other Names	Centrosomal protein of 83 kDa, Cep83, Coiled-coil domain-containing protein 41, Renal carcinoma antigen NY-REN-58, CEP83, CCDC41
Format	Liquid. Purified antibody supplied in 1x PBS buffer with 0.09% (w/v) sodium azide and 2% sucrose.
Reconstitution & Storage	Add 50 ul of distilled water. Final anti-CCDC41 antibody concentration is 1 mg/ml in PBS buffer with 2% sucrose. For longer periods of storage, store at 20°C. Avoid repeat freeze-thaw cycles.
Precautions	CCDC41 Antibody - C-terminal region is for research use only and not for use in diagnostic or therapeutic procedures.

Protein Information

Name	CEP83
Synonyms	CCDC41
Function	Component of the distal appendage region of the centriole involved in the initiation of primary cilium assembly. May collaborate with IFT20 in the trafficking of ciliary membrane proteins from the Golgi complex to the cilium during the initiation of primary cilium assembly.
Cellular Location	Cytoplasm, cytoskeleton, microtubule organizing center, centrosome, centriole. Note=Localizes specifically to the distal appendage region of the centriole, which anchors the mother centriole to the plasma membrane.

Localizes to centrioles at all stages of the cell cycle, including mitosis

Images



Host: Rabbit

Target Name: CCDC41

Sample Tissue: Jurkat Whole cell lysate

S

Antibody Dilution: 1.0µg/mlCCDC41 is supported by
BioGPS gene expression data to be expressed in Jurkat

Please note: All products are 'FOR RESEARCH USE ONLY. NOT FOR USE IN DIAGNOSTIC OR THERAPEUTIC PROCEDURES'.