

# CCDC41 Antibody - N-terminal region

Rabbit Polyclonal Antibody

Catalog # AI15638

## Product Information

<b>Application</b>	WB
<b>Primary Accession</b>	<a href="#">Q9Y592</a>
<b>Other Accession</b>	<a href="#">NM_016122</a> , <a href="#">NP_057206</a>
<b>Reactivity</b>	Human, Mouse, Rat, Rabbit, Zebrafish, Dog, Guinea Pig, Horse, Bovine
<b>Predicted</b>	Human, Mouse, Rat, Rabbit, Zebrafish, Pig, Dog, Guinea Pig, Horse, Bovine
<b>Host</b>	Rabbit
<b>Clonality</b>	Polyclonal
<b>Calculated MW</b>	82940

## Additional Information

<b>Gene ID</b>	51134
<b>Alias Symbol</b>	NY-REN-58
<b>Other Names</b>	Centrosomal protein of 83 kDa, Cep83, Coiled-coil domain-containing protein 41, Renal carcinoma antigen NY-REN-58, CEP83, CCDC41
<b>Format</b>	Liquid. Purified antibody supplied in 1x PBS buffer with 0.09% (w/v) sodium azide and 2% sucrose.
<b>Reconstitution &amp; Storage</b>	Add 50 ul of distilled water. Final anti-CCDC41 antibody concentration is 1 mg/ml in PBS buffer with 2% sucrose. For longer periods of storage, store at 20°C. Avoid repeat freeze-thaw cycles.
<b>Precautions</b>	CCDC41 Antibody - N-terminal region is for research use only and not for use in diagnostic or therapeutic procedures.

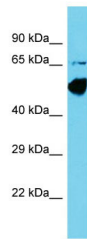
## Protein Information

<b>Name</b>	CEP83
<b>Synonyms</b>	CCDC41
<b>Function</b>	Component of the distal appendage region of the centriole involved in the initiation of primary cilium assembly. May collaborate with IFT20 in the trafficking of ciliary membrane proteins from the Golgi complex to the cilium during the initiation of primary cilium assembly.
<b>Cellular Location</b>	Cytoplasm, cytoskeleton, microtubule organizing center, centrosome, centriole. Note=Localizes specifically to the distal appendage region of the centriole, which anchors the mother centriole to the plasma membrane.

Localizes to centrioles at all stages of the cell cycle, including mitosis

## Images

---



Host: Rabbit  
Target Name: CCDC41  
Sample Tissue: COLO205 Whole cell lysate  
S  
Antibody Dilution: 1.0µg/ml

Please note: All products are 'FOR RESEARCH USE ONLY. NOT FOR USE IN DIAGNOSTIC OR THERAPEUTIC PROCEDURES'.