

C6orf203 Antibody - C-terminal region

Rabbit Polyclonal Antibody

Catalog # AI15639

Product Information

Application	WB
Primary Accession	Q9P0P8
Other Accession	NM_016487 , NP_057571
Reactivity	Human, Rat, Rabbit, Dog, Guinea Pig, Horse
Predicted	Human, Rat, Rabbit, Pig, Dog, Guinea Pig, Horse
Host	Rabbit
Clonality	Polyclonal
Calculated MW	27941

Additional Information

Gene ID	51250
Alias Symbol	PRED31, RP11-59I9.1
Other Names	Uncharacterized protein C6orf203, C6orf203
Format	Liquid. Purified antibody supplied in 1x PBS buffer with 0.09% (w/v) sodium azide and 2% sucrose.
Reconstitution & Storage	Add 50 ul of distilled water. Final anti-C6orf203 antibody concentration is 1 mg/ml in PBS buffer with 2% sucrose. For longer periods of storage, store at 20°C. Avoid repeat freeze-thaw cycles.
Precautions	C6orf203 Antibody - C-terminal region is for research use only and not for use in diagnostic or therapeutic procedures.

Protein Information

Name	MTRES1 (HGNC:17971)
Synonyms	C6orf203
Function	Mitochondrial RNA-binding protein involved in mitochondrial transcription regulation. Functions as a protective factor to maintain proper mitochondrial RNA level during stress. Acts at the transcription level and its protective function depends on its RNA binding ability (PubMed: 31226201). Part of a mitoribosome-associated quality control pathway that prevents aberrant translation by responding to interruptions during elongation (PubMed: 31396629 , PubMed: 33243891). As heterodimer with MTRF, ejects the unfinished nascent chain and peptidyl transfer RNA (tRNA), respectively, from stalled ribosomes. Recruitment of mitoribosome biogenesis factors to

these quality control intermediates suggests additional roles for MTRES1 and MTRF during mitoribosome rescue (PubMed:[33243891](#)).

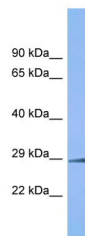
Cellular Location

Mitochondrion matrix

References

Zhang Q.-H.,et al.Genome Res. 10:1546-1560(2000).
Ota T.,et al.Nat. Genet. 36:40-45(2004).
Mungall A.J.,et al.Nature 425:805-811(2003).
Mural R.J.,et al.Submitted (SEP-2005) to the EMBL/GenBank/DDBJ databases.
Dephoure N.,et al.Proc. Natl. Acad. Sci. U.S.A. 105:10762-10767(2008).

Images



Host: Rabbit
Target Name: C6orf203
Sample Tissue: Fetal Kidney lysates
Antibody Dilution: 1.0µg/ml

Please note: All products are 'FOR RESEARCH USE ONLY. NOT FOR USE IN DIAGNOSTIC OR THERAPEUTIC PROCEDURES'.