

UBFD1 Antibody - middle region

Rabbit Polyclonal Antibody

Catalog # AI15654

Product Information

Application	WB
Primary Accession	O14562
Other Accession	NM_019116 , NP_061989
Reactivity	Human, Mouse, Rat, Rabbit, Zebrafish, Pig, Dog, Guinea Pig, Horse, Bovine
Predicted	Human, Mouse, Rat, Rabbit, Zebrafish, Pig, Dog, Guinea Pig, Horse, Bovine
Host	Rabbit
Clonality	Polyclonal
Calculated MW	33382

Additional Information

Gene ID	56061
Alias Symbol	UBPH
Other Names	Ubiquitin domain-containing protein UBFD1, Ubiquitin-binding protein homolog, UBFD1, UBPH
Format	Liquid. Purified antibody supplied in 1x PBS buffer with 0.09% (w/v) sodium azide and 2% sucrose.
Reconstitution & Storage	Add 50 ul of distilled water. Final anti-UBFD1 antibody concentration is 1 mg/ml in PBS buffer with 2% sucrose. For longer periods of storage, store at 20°C. Avoid repeat freeze-thaw cycles.
Precautions	UBFD1 Antibody - middle region is for research use only and not for use in diagnostic or therapeutic procedures.

Protein Information

Name	UBFD1
Synonyms	UBPH
Function	May play a role as NF-kappa-B regulator.

References

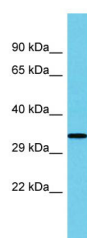
Ota T.,et al.Nat. Genet. 36:40-45(2004).
Loftus B.J.,et al.Genomics 60:295-308(1999).

Martin J.,et al.Nature 432:988-994(2004).

Mural R.J.,et al.Submitted (SEP-2005) to the EMBL/GenBank/DDBJ databases.

Fenner B.J.,et al.Biochim. Biophys. Acta 1794:1010-1016(2009).

Images



Host: Rabbit

Target Name: UBFD1

Sample Tissue: Fetal Kidney lysates

Antibody Dilution: 1.0µg/ml

Please note: All products are 'FOR RESEARCH USE ONLY. NOT FOR USE IN DIAGNOSTIC OR THERAPEUTIC PROCEDURES'.