

CCDC81 Antibody - C-terminal region

Rabbit Polyclonal Antibody

Catalog # AI15662

Product Information

Application	WB
Primary Accession	Q6ZN84
Other Accession	NM_001156474 , NP_001149946
Reactivity	Human, Mouse, Rat, Rabbit, Pig, Dog, Guinea Pig, Horse, Bovine
Predicted	Human, Mouse, Rat, Rabbit, Pig, Dog, Guinea Pig, Horse, Bovine
Host	Rabbit
Clonality	Polyclonal
Calculated MW	76084

Additional Information

Gene ID	60494
Other Names	Coiled-coil domain-containing protein 81, CCDC81
Format	Liquid. Purified antibody supplied in 1x PBS buffer with 0.09% (w/v) sodium azide and 2% sucrose.
Reconstitution & Storage	Add 50 ul of distilled water. Final anti-CCDC81 antibody concentration is 1 mg/ml in PBS buffer with 2% sucrose. For longer periods of storage, store at 20°C. Avoid repeat freeze-thaw cycles.
Precautions	CCDC81 Antibody - C-terminal region is for research use only and not for use in diagnostic or therapeutic procedures.

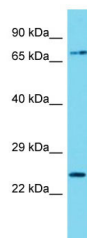
Protein Information

Name	CCDC81
Cellular Location	Cytoplasm, cytoskeleton, microtubule organizing center, centrosome

References

Ota T., et al. Nat. Genet. 36:40-45(2004).
Suzuki Y., et al. Submitted (APR-2005) to the EMBL/GenBank/DDBJ databases.

Images



Host: Rabbit
Target Name: CCDC81
Sample Tissue: Hela Whole cell lysate
S
Antibody Dilution: 1.0µg/ml

Please note: All products are 'FOR RESEARCH USE ONLY. NOT FOR USE IN DIAGNOSTIC OR THERAPEUTIC PROCEDURES'.