

# Cdk15 Antibody - N-terminal region

Rabbit Polyclonal Antibody

Catalog # AI15666

## Product Information

---

<b>Application</b>	WB
<b>Primary Accession</b>	<a href="#">Q3V3A1</a>
<b>Other Accession</b>	<a href="#">NM_001033373</a> , <a href="#">NP_001028545</a>
<b>Reactivity</b>	Human, Mouse, Rat, Rabbit, Pig, Dog, Horse
<b>Predicted</b>	Human, Mouse, Rat, Rabbit, Pig, Dog, Horse
<b>Host</b>	Rabbit
<b>Clonality</b>	Polyclonal
<b>Calculated MW</b>	48457

## Additional Information

---

<b>Gene ID</b>	271697
<b>Alias Symbol</b>	Als2cr7, Pftk2
<b>Other Names</b>	Cyclin-dependent kinase 15, 2.7.11.22, Amyotrophic lateral sclerosis 2 chromosomal region candidate gene 7 protein homolog, Cell division protein kinase 15, Serine/threonine-protein kinase ALS2CR7, Serine/threonine-protein kinase PFTAIRES-2, Cdk15, Als2cr7, Pftk2
<b>Format</b>	Liquid. Purified antibody supplied in 1x PBS buffer with 0.09% (w/v) sodium azide and 2% sucrose.
<b>Reconstitution &amp; Storage</b>	Add 50 ul of distilled water. Final anti-Cdk15 antibody concentration is 1 mg/ml in PBS buffer with 2% sucrose. For longer periods of storage, store at 20°C. Avoid repeat freeze-thaw cycles.
<b>Precautions</b>	Cdk15 Antibody - N-terminal region is for research use only and not for use in diagnostic or therapeutic procedures.

## Protein Information

---

<b>Name</b>	Cdk15
<b>Synonyms</b>	Als2cr7, Pftk2
<b>Function</b>	Serine/threonine-protein kinase that acts like an antiapoptotic protein that counters TRAIL/TNFSF10-induced apoptosis by inducing phosphorylation of BIRC5 at 'Thr-34'.

## References

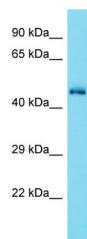
---

Carninci P.,et al.Science 309:1559-1563(2005).

Church D.M.,et al.PLoS Biol. 7:E1000112-E1000112(2009).

## Images

---



Host: Rabbit

Target Name: Cdk15

Sample Tissue: Mouse Brain lysates

Antibody Dilution: 1.0µg/ml

Please note: All products are 'FOR RESEARCH USE ONLY. NOT FOR USE IN DIAGNOSTIC OR THERAPEUTIC PROCEDURES'.