

# CCNJL Antibody - C-terminal region

Rabbit Polyclonal Antibody

Catalog # AI15672

## Product Information

---

<b>Application</b>	WB
<b>Primary Accession</b>	<a href="#">Q8IV13</a>
<b>Other Accession</b>	<a href="#">NM_024565</a> , <a href="#">NP_078841</a>
<b>Reactivity</b>	Human, Mouse, Rat, Horse, Bovine
<b>Predicted</b>	Human, Mouse, Rat, Horse, Bovine
<b>Host</b>	Rabbit
<b>Clonality</b>	Polyclonal
<b>Calculated MW</b>	48406

## Additional Information

---

<b>Gene ID</b>	79616
<b>Other Names</b>	Cyclin-J-like protein, CCNJL
<b>Format</b>	Liquid. Purified antibody supplied in 1x PBS buffer with 0.09% (w/v) sodium azide and 2% sucrose.
<b>Reconstitution &amp; Storage</b>	Add 50 ul of distilled water. Final anti-CCNJL antibody concentration is 1 mg/ml in PBS buffer with 2% sucrose. For longer periods of storage, store at 20°C. Avoid repeat freeze-thaw cycles.
<b>Precautions</b>	CCNJL Antibody - C-terminal region is for research use only and not for use in diagnostic or therapeutic procedures.

## Protein Information

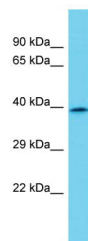
---

<b>Name</b>	CCNJL
-------------	-------

## Images

---

Host: Rabbit  
Target Name: CCNJL  
Sample Tissue: MDA-MB-435S Whole cell lysate  
s  
Antibody Dilution: 1.0µg/ml



Please note: All products are 'FOR RESEARCH USE ONLY. NOT FOR USE IN DIAGNOSTIC OR THERAPEUTIC PROCEDURES'.