

CAMKMT Antibody - C-terminal region

Rabbit Polyclonal Antibody

Catalog # AI15678

Product Information

Application	WB
Primary Accession	Q7Z624
Other Accession	NM_024766 , NP_079042
Reactivity	Human, Mouse, Rat, Rabbit, Pig, Dog, Guinea Pig, Horse, Bovine
Predicted	Human, Mouse, Rat, Rabbit, Pig, Dog, Guinea Pig, Horse, Bovine
Host	Rabbit
Clonality	Polyclonal
Calculated MW	36128

Additional Information

Gene ID	79823
Alias Symbol	C2orf34, CLNMT, CaM KMT, Cam, KMT
Other Names	Calmodulin-lysine N-methyltransferase, CLNMT, CaM KMT, 2.1.1.60, CAMKMT, C2orf34, CLNMT
Format	Liquid. Purified antibody supplied in 1x PBS buffer with 0.09% (w/v) sodium azide and 2% sucrose.
Reconstitution & Storage	Add 50 ul of distilled water. Final anti-CAMKMT antibody concentration is 1 mg/ml in PBS buffer with 2% sucrose. For longer periods of storage, store at 20°C. Avoid repeat freeze-thaw cycles.
Precautions	CAMKMT Antibody - C-terminal region is for research use only and not for use in diagnostic or therapeutic procedures.

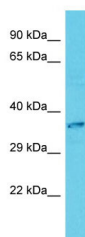
Protein Information

Name	CAMKMT
Synonyms	C2orf34, CLNMT
Function	Catalyzes the trimethylation of 'Lys-116' in calmodulin.
Cellular Location	[Isoform 1]: Cytoplasm. Nucleus
Tissue Location	Isoform 1 is expressed in brain, liver, muscle colon and lung. Isoform 2 is expressed in colon, testis, kidney and brain. Isoform 1 and isoform 2 are expressed in normal lymphoblastoid cells but not in lymphoblastoid cells from patients with hypotonia- cystinuria syndrome.

References

Ota T.,et al.Nat. Genet. 36:40-45(2004).
Hillier L.W.,et al.Nature 434:724-731(2005).
Parvari R.,et al.Genomics 86:195-211(2005).
Magnani R.,et al.Nat. Commun. 1:43-43(2010).
Burkard T.R.,et al.BMC Syst. Biol. 5:17-17(2011).

Images



Host: Rabbit
Target Name: CAMKMT
Sample Tissue: HepG2 Whole cell lysate
S
Antibody Dilution: 1.0µg/mlCAMKMT is supported by
BioGPS gene expression data to be expressed in HepG2

Please note: All products are 'FOR RESEARCH USE ONLY. NOT FOR USE IN DIAGNOSTIC OR THERAPEUTIC PROCEDURES'.