

# C2orf54 Antibody - C-terminal region

Rabbit Polyclonal Antibody

Catalog # AI15680

## Product Information

---

|                          |   |
|--------------------------|---|
| <b>Application</b>       | WB  |
| <b>Primary Accession</b> | <a href="#">Q08AI8</a>                                      |
| <b>Other Accession</b>   | <a href="#">NM_001085437</a> , <a href="#">NP_001078906</a> |
| <b>Reactivity</b>        | Human, Mouse, Rat, Pig, Dog, Guinea Pig, Horse              |
| <b>Predicted</b>         | Human, Mouse, Rat, Pig, Dog, Guinea Pig, Horse              |
| <b>Host</b>              | Rabbit  |
| <b>Clonality</b>         | Polyclonal  |
| <b>Calculated MW</b>     | 49565   |

## Additional Information

---

|                                     |  |
|-------------------------------------|--|
| <b>Gene ID</b>                      | 79919  |
| <b>Other Names</b>                  | Uncharacterized protein C2orf54, C2orf54   |
| <b>Format</b>                       | Liquid. Purified antibody supplied in 1x PBS buffer with 0.09% (w/v) sodium azide and 2% sucrose.  |
| <b>Reconstitution &amp; Storage</b> | Add 50 ul of distilled water. Final anti-C2orf54 antibody concentration is 1 mg/ml in PBS buffer with 2% sucrose. For longer periods of storage, store at 20°C. Avoid repeat freeze-thaw cycles. |
| <b>Precautions</b>                  | C2orf54 Antibody - C-terminal region is for research use only and not for use in diagnostic or therapeutic procedures.   |

## Protein Information

---

|             |  |
|-------------|--|
| <b>Name</b> | MAB21L4 ( <a href="#">HGNC:26216</a> ) |
|-------------|--|

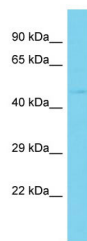
## References

---

Ota T.,et al.Nat. Genet. 36:40-45(2004).  
Hillier L.W.,et al.Nature 434:724-731(2005).

## Images

---



Host: Rabbit  
Target Name: C2orf54  
Sample Tissue: Hela Whole cell lysate  
S  
Antibody Dilution: 1.0µg/ml

Please note: All products are 'FOR RESEARCH USE ONLY. NOT FOR USE IN DIAGNOSTIC OR THERAPEUTIC PROCEDURES'.