

CCDC176 Antibody - N-terminal region

Rabbit Polyclonal Antibody

Catalog # AI15682

Product Information

Application	WB
Primary Accession	Q8ND07
Other Accession	NM_025057 , NP_079333
Reactivity	Human, Mouse, Rat, Pig, Dog, Guinea Pig, Horse, Bovine
Predicted	Human, Mouse, Rat, Pig, Dog, Guinea Pig, Horse, Bovine
Host	Rabbit
Clonality	Polyclonal
Calculated MW	61987

Additional Information

Gene ID	80127
Other Names	Basal body-orientation factor 1, Coiled-coil domain-containing protein 176, CCDC176, BBOF1, C14orf45
Format	Liquid. Purified antibody supplied in 1x PBS buffer with 0.09% (w/v) sodium azide and 2% sucrose.
Reconstitution & Storage	Add 50 ul of distilled water. Final anti-CCDC176 antibody concentration is 1 mg/ml in PBS buffer with 2% sucrose. For longer periods of storage, store at 20°C. Avoid repeat freeze-thaw cycles.
Precautions	CCDC176 Antibody - N-terminal region is for research use only and not for use in diagnostic or therapeutic procedures.

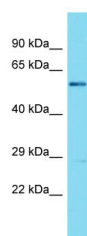
Protein Information

Name	BBOF1 (HGNC:19855)
Synonyms	C14orf45, CCDC176
Function	Plays an essential role in sperm motility and male fertility by stabilizing the sperm flagellar axonemal structure. May be required for the stability of ODF2 and MANS1 proteins. Dispensable for the assembly and function of motile cilia.
Cellular Location	Cytoplasm, cytoskeleton, cilium basal body {ECO:0000250 UniProtKB:A0JMY4}. Cytoplasm, cytoskeleton, flagellum axoneme {ECO:0000250 UniProtKB:Q3V079}. Note=Localizes to a polar structure adjacent to the basal body. {ECO:0000250 UniProtKB:A0JMY4}

References

Heilig R.,et al.Nature 421:601-607(2003).
Bechtel S.,et al.BMC Genomics 8:399-399(2007).
Ota T.,et al.Nat. Genet. 36:40-45(2004).

Images



Host: Rabbit
Target Name: CCDC176
Sample Tissue: PANC1 Whole cell lysate
S
Antibody Dilution: 1.0µg/ml

Please note: All products are 'FOR RESEARCH USE ONLY. NOT FOR USE IN DIAGNOSTIC OR THERAPEUTIC PROCEDURES'.