

C4orf29 Antibody - N-terminal region

Rabbit Polyclonal Antibody

Catalog # AI15683

Product Information

Application	WB
Primary Accession	Q0P651
Other Accession	NM_001039717 , NP_001034806
Reactivity	Human, Mouse, Rat, Rabbit, Zebrafish, Dog, Guinea Pig, Horse, Bovine
Predicted	Human, Mouse, Rat, Rabbit, Zebrafish, Pig, Dog, Guinea Pig, Horse, Bovine
Host	Rabbit
Clonality	Polyclonal
Calculated MW	46954

Additional Information

Gene ID	80167
Other Names	Uncharacterized protein C4orf29, C4orf29
Format	Liquid. Purified antibody supplied in 1x PBS buffer with 0.09% (w/v) sodium azide and 2% sucrose.
Reconstitution & Storage	Add 50 ul of distilled water. Final anti-C4orf29 antibody concentration is 1 mg/ml in PBS buffer with 2% sucrose. For longer periods of storage, store at 20°C. Avoid repeat freeze-thaw cycles.
Precautions	C4orf29 Antibody - N-terminal region is for research use only and not for use in diagnostic or therapeutic procedures.

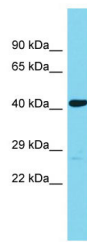
Protein Information

Name	ABHD18 (HGNC:26111)
Synonyms	C4orf29
Cellular Location	Secreted.

References

Ota T.,et al.Nat. Genet. 36:40-45(2004).

Images



Host: Rabbit
Target Name: C4orf29
Sample Tissue: Fetal Heart lysates
Antibody Dilution: 1.0µg/ml

Please note: All products are 'FOR RESEARCH USE ONLY. NOT FOR USE IN DIAGNOSTIC OR THERAPEUTIC PROCEDURES'.