

C1orf21 Antibody - C-terminal region

Rabbit Polyclonal Antibody

Catalog # AI15686

Product Information

Application	WB
Primary Accession	Q9H246
Other Accession	NP_110433
Reactivity	Human
Host	Rabbit
Clonality	Polyclonal
Calculated MW	13865

Additional Information

Gene ID	81563
Alias Symbol Other Names	C1orf21, PIG13, Uncharacterized protein C1orf21, Cell proliferation-inducing gene 13 protein, C1orf21
Format	Liquid. Purified antibody supplied in 1x PBS buffer with 0.09% (w/v) sodium azide and 2% sucrose.
Reconstitution & Storage	Add 50 µl of distilled water. Final Anti-C1orf21 antibody concentration is 1 mg/ml in PBS buffer with 2% sucrose. For longer periods of storage, store at -20°C. Avoid repeat freeze-thaw cycles.
Precautions	C1orf21 Antibody - C-terminal region is for research use only and not for use in diagnostic or therapeutic procedures.

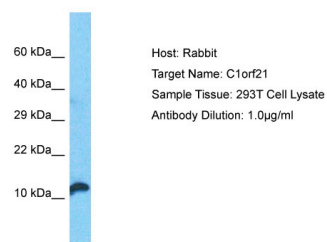
Protein Information

Name	C1orf21
Tissue Location	Expressed in spleen, prostate, testis and uterus.

References

Sood R.,et al.Genomics 73:211-222(2001).
Kim J.W.,et al.Submitted (MAR-2003) to the EMBL/GenBank/DDBJ databases.
Ota T.,et al.Nat. Genet. 36:40-45(2004).
Gregory S.G.,et al.Nature 441:315-321(2006).
Mural R.J.,et al.Submitted (JUL-2005) to the EMBL/GenBank/DDBJ databases.

Images



Host: Rabbit
Target Name: C1orf21
Sample Tissue: 293T Whole cell lysate
S
Antibody Dilution: 1.0µg/ml

Please note: All products are 'FOR RESEARCH USE ONLY. NOT FOR USE IN DIAGNOSTIC OR THERAPEUTIC PROCEDURES'.