

# CEP89 Antibody - N-terminal region

Rabbit Polyclonal Antibody

Catalog # AI15697

## Product Information

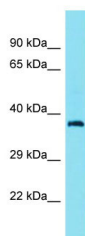
|                   |                          |
|-------------------|--------------------------|
| Application       | WB                       |
| Primary Accession | <a href="#">Q96ST8-3</a> |
| Reactivity        | Human, Horse             |
| Predicted         | Human, Horse             |
| Host              | Rabbit                   |
| Clonality         | Polyclonal               |
| Calculated MW     | 39 kDa                   |

## Additional Information

|                          |  |
|--------------------------|--|
| Format                   | Liquid. Purified antibody supplied in 1x PBS buffer with 0.09% (w/v) sodium azide and 2% sucrose.  |
| Reconstitution & Storage | Add 50 ul of distilled water. Final anti-CEP89 antibody concentration is 1 mg/ml in PBS buffer with 2% sucrose. For longer periods of storage, store at 20°C. Avoid repeat freeze-thaw cycles. |
| Precautions              | CEP89 Antibody - N-terminal region is for research use only and not for use in diagnostic or therapeutic procedures.   |

## Protein Information

## Images



Host: Rabbit  
Target Name: CEP89  
Sample Tissue: OVCAR-3 Whole cell lysate  
S  
Antibody Dilution: 1.0µg/ml

Please note: All products are 'FOR RESEARCH USE ONLY. NOT FOR USE IN DIAGNOSTIC OR THERAPEUTIC PROCEDURES'.