

# ARHGEF39 Antibody - C-terminal region

Rabbit Polyclonal Antibody

Catalog # AI15698

## Product Information

---

<b>Application</b>	WB
<b>Primary Accession</b>	<a href="#">Q8N4T4</a>
<b>Other Accession</b>	<a href="#">NM_032818</a> , <a href="#">NP_116207</a>
<b>Reactivity</b>	Human, Mouse, Rat, Rabbit, Pig, Dog, Guinea Pig, Horse, Bovine
<b>Predicted</b>	Human, Mouse, Rat, Rabbit, Pig, Dog, Guinea Pig, Horse, Bovine
<b>Host</b>	Rabbit
<b>Clonality</b>	Polyclonal
<b>Calculated MW</b>	38295

## Additional Information

---

<b>Gene ID</b>	84904
<b>Alias Symbol</b>	RP11-331F9.7
<b>Other Names</b>	Rho guanine nucleotide exchange factor 39, ARHGEF39, C9orf100
<b>Format</b>	Liquid. Purified antibody supplied in 1x PBS buffer with 0.09% (w/v) sodium azide and 2% sucrose.
<b>Reconstitution &amp; Storage</b>	Add 50 ul of distilled water. Final anti-ARHGEF39 antibody concentration is 1 mg/ml in PBS buffer with 2% sucrose. For longer periods of storage, store at 20°C. Avoid repeat freeze-thaw cycles.
<b>Precautions</b>	ARHGEF39 Antibody - C-terminal region is for research use only and not for use in diagnostic or therapeutic procedures.

## Protein Information

---

<b>Name</b>	ARHGEF39
<b>Synonyms</b>	C9orf100
<b>Function</b>	Promotes cell proliferation.
<b>Cellular Location</b>	Cell membrane.
<b>Tissue Location</b>	Strongly expressed in hepatocellular carcinoma (HCC) compared with their non-cancerous counterparts

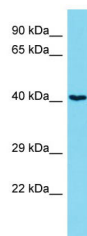
## References

---

Makela H.M.A.,et al.Submitted (SEP-2003) to the EMBL/GenBank/DDBJ databases.  
Ota T.,et al.Nat. Genet. 36:40-45(2004).  
Humphray S.J.,et al.Nature 429:369-374(2004).  
Wang H.,et al.Mol. Med. Report. 5:1169-1174(2012).

## Images

---



Host: Rabbit  
Target Name: ARHGEF39  
Sample Tissue: Jurkat Whole cell lysate  
S  
Antibody Dilution: 1.0µg/ml

Please note: All products are 'FOR RESEARCH USE ONLY. NOT FOR USE IN DIAGNOSTIC OR THERAPEUTIC PROCEDURES'.