

CCDC120 Antibody - C-terminal region

Rabbit Polyclonal Antibody

Catalog # AI15705

Product Information

Application	WB
Primary Accession	Q96HB5
Other Accession	NM_033626 , NP_296375
Reactivity	Human, Mouse, Rat, Rabbit, Zebrafish, Pig, Dog, Guinea Pig, Horse, Bovine
Predicted	Human, Mouse, Rat, Rabbit, Zebrafish, Pig, Dog, Guinea Pig, Horse, Bovine
Host	Rabbit
Clonality	Polyclonal
Calculated MW	67567

Additional Information

Gene ID	90060
Other Names	Coiled-coil domain-containing protein 120, CCDC120
Format	Liquid. Purified antibody supplied in 1x PBS buffer with 0.09% (w/v) sodium azide and 2% sucrose.
Reconstitution & Storage	Add 50 ul of distilled water. Final anti-CCDC120 antibody concentration is 1 mg/ml in PBS buffer with 2% sucrose. For longer periods of storage, store at 20°C. Avoid repeat freeze-thaw cycles.
Precautions	CCDC120 Antibody - C-terminal region is for research use only and not for use in diagnostic or therapeutic procedures.

Protein Information

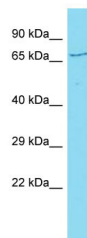
Name	CCDC120
Function	Centriolar protein required for centriole subdistal appendage assembly and microtubule anchoring in interphase cells (PubMed: 28422092). Together with CCDC68, cooperate with subdistal appendage components ODF2, NIN and CEP170 for hierarchical subdistal appendage assembly (PubMed: 28422092). Recruits NIN and CEP170 to centrosomes (PubMed: 28422092). Also required for neurite growth. Localizes CYTH2 to vesicles to allow its transport along neurites, and subsequent ARF6 activation and neurite growth.
Cellular Location	Cytoplasm, cytoskeleton, microtubule organizing center, centrosome, centriole. Cytoplasm. Cell projection, neuron projection. Cell projection, growth cone. Endosome Note=Localizes to the subdistal appendages of mother centrioles and proximal ends of both centrioles in interphase cells

(PubMed:28422092) Recruited to subdistal appendages by ODF2 (PubMed:28422092). In differentiating neuroblastoma cells, colocalizes with CYTH2 in both neurite shaft and growth cone areas (PubMed:25326380). Partially colocalizes with endosomes along neurites in differentiating neuroblastoma cells (PubMed:25326380).

References

Rolfs A.,et al.Submitted (SEP-2006) to the EMBL/GenBank/DDBJ databases.
Ota T.,et al.Nat. Genet. 36:40-45(2004).
Ross M.T.,et al.Nature 434:325-337(2005).
Matsuoka S.,et al.Science 316:1160-1166(2007).
Dephoure N.,et al.Proc. Natl. Acad. Sci. U.S.A. 105:10762-10767(2008).

Images



Host: Rabbit
Target Name: CCDC120
Sample Tissue: Hela Whole cell lysate
S
Antibody Dilution: 1.0µg/ml

Please note: All products are 'FOR RESEARCH USE ONLY. NOT FOR USE IN DIAGNOSTIC OR THERAPEUTIC PROCEDURES'.