

# CCDC34 Antibody - middle region

Rabbit Polyclonal Antibody

Catalog # AI15709

## Product Information

---

<b>Application</b>	WB
<b>Primary Accession</b>	<a href="#">Q96HJ3</a>
<b>Other Accession</b>	<a href="#">NM_080654</a> , <a href="#">NP_542385</a>
<b>Reactivity</b>	Human, Mouse, Rat, Rabbit, Pig, Dog, Horse, Bovine, Yeast
<b>Predicted</b>	Human, Mouse, Rat, Rabbit, Pig, Dog, Horse, Bovine, Yeast
<b>Host</b>	Rabbit
<b>Clonality</b>	Polyclonal
<b>Calculated MW</b>	43225

## Additional Information

---

<b>Gene ID</b>	91057
<b>Alias Symbol</b>	NY-REN-41, RAMA3
<b>Other Names</b>	Coiled-coil domain-containing protein 34, Renal carcinoma antigen NY-REN-41, CCDC34, RAMA3
<b>Format</b>	Liquid. Purified antibody supplied in 1x PBS buffer with 0.09% (w/v) sodium azide and 2% sucrose.
<b>Reconstitution &amp; Storage</b>	Add 50 ul of distilled water. Final anti-CCDC34 antibody concentration is 1 mg/ml in PBS buffer with 2% sucrose. For longer periods of storage, store at 20°C. Avoid repeat freeze-thaw cycles.
<b>Precautions</b>	CCDC34 Antibody - middle region is for research use only and not for use in diagnostic or therapeutic procedures.

## Protein Information

---

<b>Name</b>	CCDC34
<b>Synonyms</b>	RAMA3
<b>Function</b>	Involved in spermatogenesis. Has a probable role in anterograde intraflagellar transport which is essential for the formation of sperm flagella.
<b>Cellular Location</b>	Cell projection, cilium, flagellum. Note=Mainly located in the mid-piece of sperm flagella.
<b>Tissue Location</b>	Expressed in sperm..

## References

---

Petroziello J.,et al.Oncogene 23:7734-7745(2004).

Ota T.,et al.Nat. Genet. 36:40-45(2004).

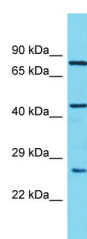
Taylor T.D.,et al.Nature 440:497-500(2006).

Scanlan M.J.,et al.Int. J. Cancer 83:456-464(1999).

Panvichian R.,et al.Submitted (MAY-2001) to the EMBL/GenBank/DDBJ databases.

## Images

---



Host: Rabbit

Target Name: CCDC34

Sample Tissue: OVCAR-3 Whole cell lysate

S

Antibody Dilution: 1.0µg/ml

Please note: All products are 'FOR RESEARCH USE ONLY. NOT FOR USE IN DIAGNOSTIC OR THERAPEUTIC PROCEDURES'.